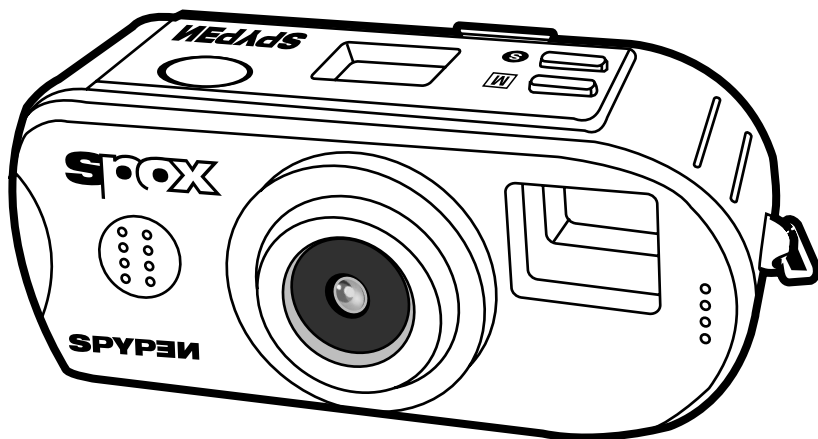


SPYPEN™

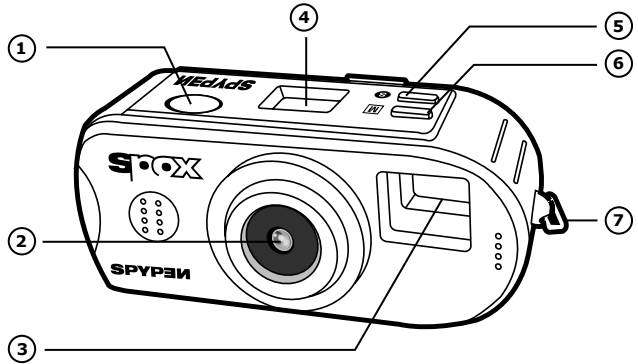
SPOX



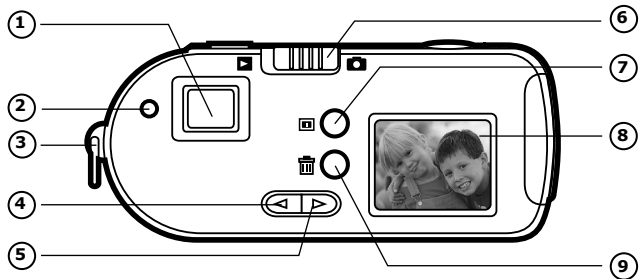
User's Manual

Product Overview

1. Shutter Button
2. Lens
3. Viewfinder
4. Status LCD
5. Select button
6. Mode button
7. Strap Holder

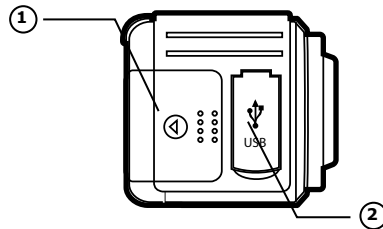


1. Viewfinder
2. Power/Status LED
3. Strap Holder
4. Previous Button
5. Next Button
6. Function Switch
7. Monitor ON/OFF button
8. Monitor LCD
9. Delete Button



Back View

1. Battery Compartment
2. USB Cable Port




Side View


Table of Contents

1 Getting Started	4
• What Can I do with my Camera?.....	4
• What can I do with my Digital Pictures?	4
• What can I do with my Video Clips?.....	4
• Camera Package Contents.....	4
• Installing the batteries	4
• Turning the Camera On and Off	5
• Checking the battery level	5
• Automatic power off saves batteries	5
• Checking Camera Status.....	5
2 Taking Pictures	5
• Taking a Picture.....	5
• Setting the Picture Quality	6
• Setting Digital Zoom	6
• Self Timer	6
• Previewing the Pictures	6
• Deleting a Picture from the Camera.....	6
• Deleting All Pictures from the Camera.....	6
3 Recording Video Clips	7
• Recording Video Clips	7
• Deleting Video Clip from the camera.	7
• Deleting all Video Clips from the camera.	7
4 Installing the Software onto a Computer	7
• Window® 98SE Users.....	7
• Install the software.....	7
• Software included with your camera	8
• Computer system requirements.....	11
5 Transferring Pictures, and Video Clips & Audio To Your Computer.....	12
• Before you transfer pictures	12
• Connecting to your computer	12
• Transferring & viewing the Pictures on a computer	12
• Transferring & playing Video Clips on a computer	12
• Taking pictures from live video	12
6 Using your camera as a Web Cam	13
• Setting up	13
• Making a call.....	13
7 Troubleshooting Problems	14
• Troubleshooting	14
8 Getting Help.....	15
• Software Help	15
• Spyypen On-line Services.....	15
• Customer Support	15
9 Appendix	15
• Technical Specifications	15
• Using your batteries.....	16
• Tips, Your Safety & Maintenance	16
• Regulatory Information.....	16

1 Getting Started


• What Can I do with my Camera?

Capture  Enjoy point & shoot operation. Store pictures and video clips on the internal NAND flash


Set Up  Select various camera settings

Communicate  Use the camera as a web camera


• What can I do with my Digital Pictures?

View  Pictures on a computer using the Arcsoft® software supplied


Save  Pictures to the computer memory

Communicate  Send the pictures over the internet to family and friends

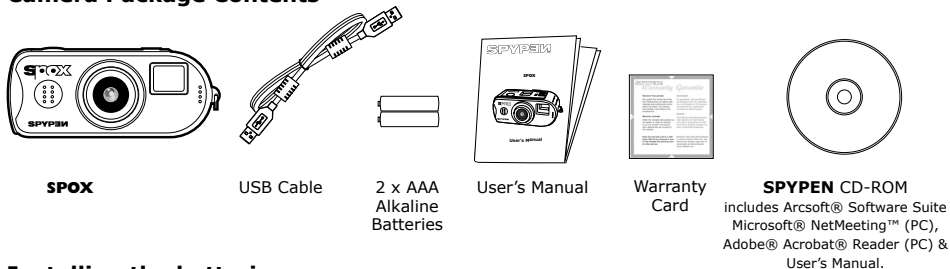
• What can I do with my Video Clips ?

Playback  Video clips on a computer using the Arcsoft® software supplied

Save  Video clips to the computer memory

Communicate  Send the video clips over the internet to family and friends

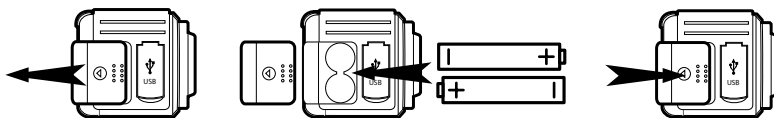
• Camera Package Contents



• Installing the batteries

2 x AAA Alkaline batteries are supplied with the product.

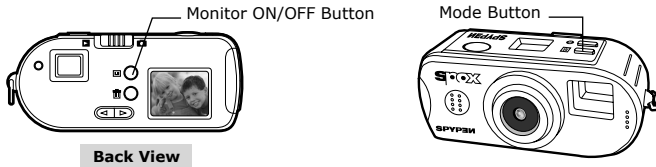
1. Open the camera battery door by sliding the door open.
2. Insert the batteries as shown, ensuring you follow the +/- signs correctly.
3. Close the battery door.



 **NOTE:** **BATTERY DRAIN - TO SAVE THE LIFE OF YOUR BATTERIES, ALWAYS REMOVE THE AAA BATTERIES, IF YOU ARE NOT GOING TO USE THE CAMERA.**

● Turning the Camera On and Off

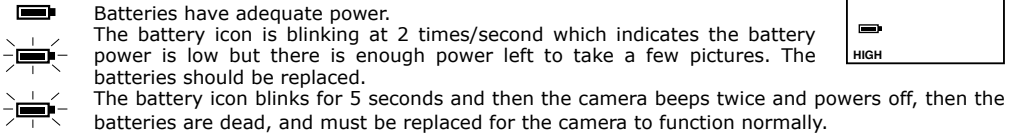
To turn the camera on, firmly press the Mode button **M**. Press the Monitor ON/OFF Button to switch on the Monitor LCD, the camera will beep to indicate that the Monitor LCD is switched on. To turn the camera off, press and hold down the Mode button for 3 seconds. The camera will beep twice and the monitor LCD will switch off.



● Checking the battery level

Check the battery power level before taking pictures.

1. Turn the camera on.
2. Check the battery status level that appears on the camera monitor LCD



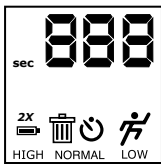
Note: Images can not be lost when the batteries run out of power. The camera is equipped with Flash memory which is non-volatile.

● Automatic power off saves batteries

Your camera is designed to switch off automatically and save battery life after not being used for 60 seconds

● Checking Camera Status

The camera status LCD displays the current camera status and settings. If a feature icon is not displayed, that particular feature is not current activated.

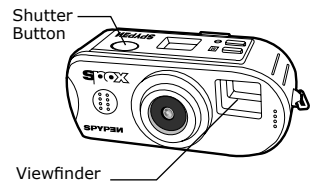


Picture Quality		Camera Status	Other Features
HIGH	Best	008 Pictures taken	Delete Mode
NORMAL	Better	USB USB connected	Self-Timer Mode
LOW	Good		Video Mode
Full Battery		Low Battery	2x 2X Digital zoom
			sec "Second" Display

2 Taking Pictures

● Taking a Picture

1. Switch the camera on, set the function switch to Image Capture Mode.
2. Frame the subject using either the camera optical viewfinder or the video viewfinder (the monitor LCD). The video viewfinder is enabled by pressing the Monitor ON/OFF Button on the rear of the camera adjacent to the monitor LCD.
3. Hold the camera steady and fully press the Shutter button to take a picture. The camera will beep when the picture has been taken, and the picture count will increase by 1.
4. The Status LCD will display the number of pictures taken. When the camera only has enough memory to store an additional 3 pictures or 5 seconds of video, the picture count will blink. When the memory is full, the camera will display CF, camera full, on the status LCD.



● **Setting the Picture Quality**


1. Switch the camera on, set the function switch to Image Capture Mode.
2. Pressing the Mode button **M** will alter the camera settings – in order
Still Image Capture Quality Settings
Self-Timer
2X Digital Zoom
Delete All
Video Clip Capture
3. Press the Mode Button **M** the first time to enter the Still Image Quality Mode. Press the Select Button to toggle through the HIGH, NORMAL, and LOW settings and select the one you want.
4. The picture quality settings are described below;
 - **HIGH** resolution (1280 x 1024) with 3:1 compression ratio for detailed images, large file size and prints.
 - **NORMAL** resolution (1280 x 1024) with 6:1 compression ratio for standard image quality, smaller file size and prints.
 - **LOW** resolution (640 x 512) with 6:1 compression ratio for economy images, small file sizes ideal for e-mailing.

● **Setting Digital Zoom**

1. Switch the camera on, set the function switch to Image Capture Mode.
2. Digital Zoom can be turned on and off for all still image quality settings. Press the Mode Button **M** until the 2X icon is blinking. Pressing the Select Button allows you to toggle 2X digital zoom ON and OFF.
3. You can frame the subject through either the optical viewfinder or the video viewfinder. The optical viewfinder has special index marks that show the digital zoom framing. When the camera is in 2X digital zoom mode, the video viewfinder show the zoomed image on the monitor LCD for accurate framing.

● **Self-timer**

Your camera is designed with a self-timer function which will allow you to take pictures with a 10 seconds timer built in. Frame your subject and use the stand enclosed to position your camera.

1. Switch the camera on, set the function switch to Image Capture Mode.
2. Press the Mode Button **M** until the Self-timer icon  is blinking. Press the Select Button to select Self-timer mode on.
3. Frame the subject.
4. Press the shutter button. The camera will emit an audible beep once per second for the first 7 seconds of countdown, then will emit 2 beeps per second for the last 3 seconds to indicate that the camera is getting ready to take the picture. The camera will take the picture after 10 seconds have elapsed.


● **Previewing the pictures**

1. Switch the camera on by pressing the Mode button **M**.
2. Set the camera function switch on the rear of the camera to Review Mode.
3. The first image displayed on the monitor LCD is the last picture that was taken on the camera. The status LCD will display the number of the image being displayed as well as its image quality setting.
4. Use the Next and Previous buttons to review other images stored in the camera. The images are displayed in a circular fashion.

● **Deleting a Picture from the Camera**


1. Switch the camera on.
2. Set the function switch to Image Review Mode.
3. When you have displayed an review image on the monitor LCD that you would like to delete, press the Delete button adjacent to the monitor LCD to delete the image.
4. The image counter on the status LCD will be reduced by one

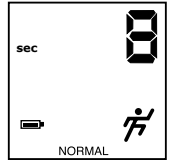
● **Deleting All Pictures from the Camera**

1. Switch the camera on, set the function switch to Image Capture Mode.
2. Press the Mode Button **M** until the Trashcan icon  is blinking on the status LCD. Press the Select Button to enable the Delete All Mode. Press the shutter button to Delete All images from the camera. The camera will beep 3 times to confirm that the images were deleted. If the shutter button is not pressed within 5 seconds of selecting the Delete All mode, the camera will revert to the last state that it was in prior to entering the Delete All mode.

3 Recording Video Clips

● Recording Video Clips

1. Switch the camera on, set the function switch to Image Capture Mode.
2. Press the Mode Button **M** until the video clip icon  is blinking. Press the Select Button to select the video clip capture mode.
3. Frame the subject through either the optical viewfinder or the video viewfinder by pressing the Monitor ON/OFF Button to enable video viewfinder operation.
4. Press the shutter button once to start video clip capture.
5. The status LCD will start counting the length of the video clip in seconds.
6. Note that when the video clip capture is started with the video viewfinder on, the video viewfinder frame rate will slow down. This does not affect the frame rate of the captured video clip.
7. Press the shutter button a second time to stop the video clip capture.




REMARK:

The captured video clip cannot playback on a the Monitor LCD.

● Deleting Video Clip from the camera

1. Switch the camera on.
2. Set the function switch to Image Review Mode.
3. When you have displayed a video clip on the monitor LCD that you would like to delete, press the Delete button adjacent to the monitor LCD to delete the video clip.

● Deleting All Video Clips from the Camera


1. Switch the camera on, set the function switch to Image Capture Mode.
2. Press the Mode Button **M** until the Trashcan icon  is blinking on the status LCD. Press the Select Button to enable the Delete All Mode. Press the shutter button to Delete All video clips from the camera. The camera will beep 3 times to confirm that the video clips were deleted. If the shutter button is not pressed within 5 seconds of selecting the Delete All mode, the camera will revert to the last state that it was in prior to entering the Delete All mode.


4 Installing your Software onto a Computer

● Window® 98SE users

Window® 98SE users will require to download DirectX 6.1 or higher software from the internet. Go to <http://www.microsoft.com/directx> and find the free download DirectX 6.1.

● Install the software

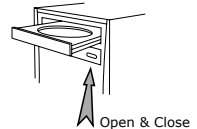
 **IMPORTANT!** - Make sure you install all the software from the CD supplied before you connect your camera to a computer and transfer pictures from your camera to the computer.


 **IMPORTANT!** - If the computer request you to install the Windows operating system during the software installation, place the windows CD into the computer CD ROM drive. The computer will install the necessary files from the CD automatically. When the Windows software appears to have finished the operation close the Windows screen. Remove the Windows CD and store safely.

Note:

Microsoft® Netmeeting™ already bundled into Windows® 2000 and XP OS. Users using Window® 2000 or XP do not need to install this software from the CD-ROM.

1. Before you begin, close all other software applications open on your computer.
2. Insert the CD supplied into the computer CD-ROM Drive.
3. The CD User Interface Screen will automatically launch.
4. With the mouse, click on each software interface button in turn following the on screen prompts.



 **NOTE!** When prompted to do so, register your name and the other details requested for further on line support. You must be connected to your internet service provider to register on line electronically.



• Software included with your camera

The **SPOX** software CD contains the following software;

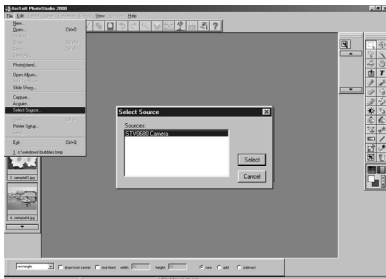
SPYPEN "My Camera" Picture Transfer Software

My Camera software enable Pictures and Movie files to be transferred to the computer from the camera. Create your own files and folders to store the Pictures. Use the Arcsoft® software suite to edit and print the Pictures.

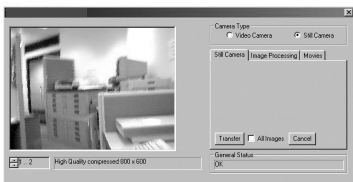
PhotoStudio® 4.0 Picture Editing Software

PhotoStudio® 4.0 is a full-featured, easy-to-use digital image-editing program that provides a complete set of photo editing and retouching tools, plus a wide selection of special effects and enhancements. Its powerful features include a wide variety of input and output options, layers, multiple undo and redo functions, image management tools, editable text, multiple file format support and a lot more.

1. Go to Start > Programs > ArcSoft software Suite > PhotoStudio 4.0.
You can now start to download your stored images from your **SPOX** by the following steps:
2. Go to "File" and select "Select Source". Select "TCG 201 Camera" as source.



3. Go to "File" and select "Acquire". The capture interface will show up. To capture image(s), scroll through the image(s) stored in our camera and click "Transfer". When you have finish, click on "Cancel" to go back to window.

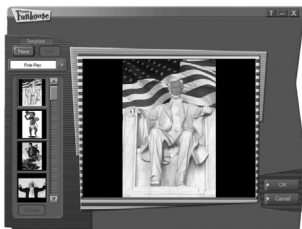
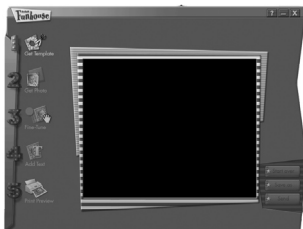
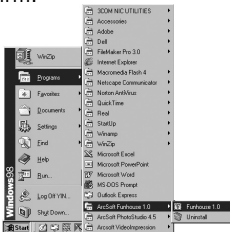


4. For further help on how to use PhotoStudio® 4.0, go to "Help" to access the Help Topics. Visit <http://www.arcsoft.com> for all your FAQ's, tips and technical support. See Section 8 for more details.

ArcSoft Funhouse™ 1.0 Picture Editing Software

ArcSoft Funhouse™ is an image entertainment application that enables users to create "photo fantasies" by combining their personal photos with a wide variety of fantasy backgrounds. Users can get their own images from digital cameras, scanners, disk drives and Photo CDs, and seamlessly combine them with just a few clicks of the mouse. The fantasy backgrounds include fictional characters, classic works of art, Olympic heroes, 50's funnies, bathing beauties, muscle men and a lot more.

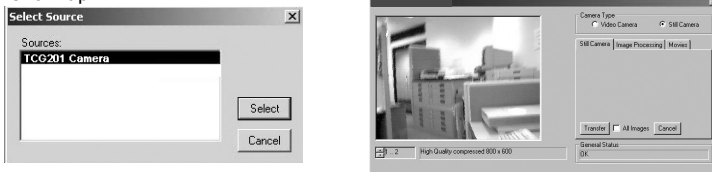
1. Click Start > Programs > ArcSoft Software Suite > Funhouse 1.0.
2. Click "1. Get Template" to select the template in the different type of category and then click "OK" to confirm.



Important! Make sure the "Spypen Spox" CD-ROM is in the CD-ROM Drive.

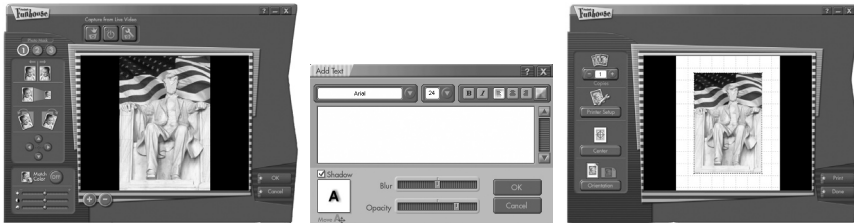
Using the images stored in your Digital Camera:-

3. Double click on "2. Get Photo" and click "Acquire". Select "TCG 201 Camera" as the source. The capture interface will show up.



Important! Make sure your Digital Camera is connected to your computer.

4. The image(s) stored in your Digital Camera will be shown in the window. To capture image(s), highlight the wanted image(s) and click "Capture".
5. The selected image will shown within the "mask" on the selected template. You can play with the image by clicking on "3. Fine-Tune" to resize, rotate or reposition the images by reposition the image using your mouse and dragging the image. Press "OK" to confirm.
6. Click "4. Add Text". Type in the text you want to write and then press "OK" to confirm.
7. Click "5. Print Preview" to print a hardcopy.






Using live images:-

8. You can also capture a live shot when your **Digital Camera** is connected to your PC by the following steps:

9. Go to "Get Template" to select the template and then press "OK" to confirm.

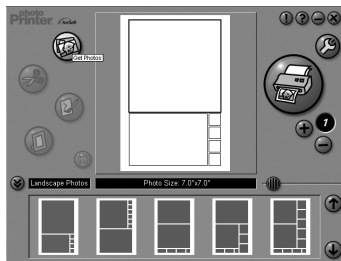
Important! Make sure the "Spypen Spox" CD-ROM is in the CD-ROM Drive.

10. Go to "Get Photo" and then click the "Live Video Mode" icon  and the "Live" icon  will flash to indicate that it is in live mode. Click the "Capture" icon  to take a live snapshot. Press "OK" to confirm.
11. For further help on how to use ArcSoft Funhouse™ 1.0, go to "Help" to access the Help Topics. Visit <http://www.arcsoft.com> for all your FAQ's, tips and technical support. See Section 8 for more details.

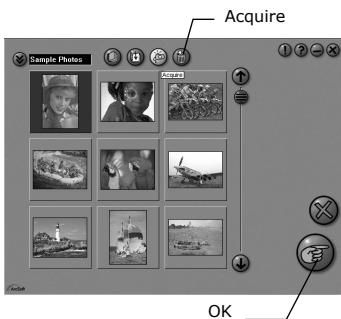
ArcSoft PhotoPrinter® 2000 Picture Printing Software

ArcSoft PhotoPrinter® is an easy-to-use printing utility that enables the user to layout and print multiple images in different sizes quickly and easily on a single sheet of paper. The program offers a large selection of printing templates, including Kodak Digital Science Inkjet Photo Paper Templates and Avery-brand paper products. It also includes commonly used image-editing tools and a wide selection of templates for frames, edges and backgrounds for enhancing images.

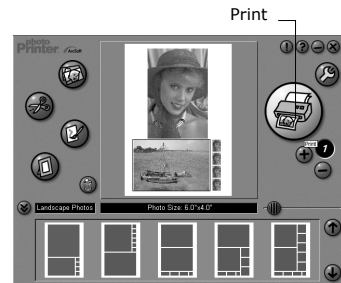
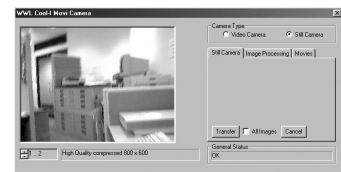
1. Go to Start > Programs > ArcSoft Software Suite > PhotoPrinter 2000.
2. Choose the "Page Layout". The selected page layout will on shown.



3. Click "Get Photo" and then "Acquire". Select "TCG 201 Camera" as source. The capture interface will show up. To capture image(s), scroll through the image(s) stored in our camera and click "Transfer". When you have finish, click on "Cancel" to go back to window.



4. The captured images will be shown on the photo library panel. Select the image you want and click "OK".
5. The selected image will be shown on the chosen template. Click "Print" when finish placing the images.
6. For further help on how to use ArcSoft PhotoPrinter™ 2000, click the "?" on the top right hand corner to access the Help Topics. Visit <http://www.arcsoft.com> for all your FAQ's, tips and technical support. See Section 8 for more details.



ArcSoft VideoImpression™ 1.6 Movie Making Software

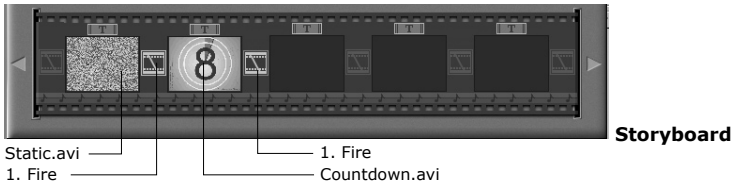
ArcSoft VideoImpression™ is an easy-to-use video and image editing software program. The program enables users to create and edit new videos using existing video and image files - making desktop video presentations for home, business, and the Web.

Lets make a video!




Follow these basic steps to make your first video.

- Step 1 Click on new Icon.
- Step 2 Using the **Video Templates** selector button select video templates.
- Step 3 Double click on the Static.avi screen in the video template selection and a copy will appear in the first large frame on the storyboard on the bottom.
- Step 4 Double click on the small frame directly right of the large frame. A new template will appear at the top called "special effects" Double click on the "1. Fire" special effect which will now drop into the special effect frame you highlighted.

- Step 5 Double click on the next right large frame and repeat step 3 using a video template and double click template 5.
 Countdown.avi. Repeat step 4.

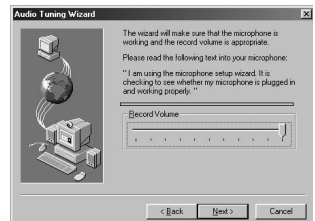


Adding an existing video.

- Step 6 To add a video you have already made double click on the next large frame in the story board to the right. Click on the "Get" icon and select a video you had made and filed in the folder called "album" click on Get, with the selector click on the down arrow and select desktop and then double click on "Album" folder and select a file ending with .mov (video file) the video will appear in the video templates. Double click on the video and it will appear just like other video templates in the storyboard. Now go to step 10.
 Alternatively you can produce a live video.
 Ensure your **SPOX** is connected to the computer via the USB cable. Click on the capture icon.
- Step 7 And press the  record icon. Wait for the video link to go live and now you're recording, press the ESC key on your keyboard to end the video.
- Step 8 Press the "Save" icon and name your file, and then press "save". Video impression will ask you where you want to place your video. Select "video template".
- Step 9 Select the "album" icon and your video clip you have just produced will appear in the video templates. Double click on your video, your video will now drop into the storyboard.
 Running the video.
- Step 10 Select the "play movie" icon  which will assemble your video together. Press the  play icon to watch your completed video. Watch to see how the special effects merge between the frames on the story board. Now you try to make your own and also try the audio template.

Microsoft® Netmeeting™ Web Cam software

NetMeeting™ provides the most complete conferencing solution for the Internet and corporate intranet. Powerful features let you communicate with both audio and video, collaborate on virtually any Windows-based application, exchange graphics on an electronic whiteboard, transfer files, use the text-based chat program, and much more. Using your PC and the Internet, you can now hold face-to-face conversations with friends and family around the world.



Adobe® Acrobat® Reader .PDF File Editing Software

Adobe® Acrobat® Reader lets you view and print Adobe Portable Document format (PDF) files on all major computer platforms, as well as fill in and submit Adobe PDF forms online.

• Computer system requirements

For acceptable picture transfer and editing, we recommend the following minimum requirements;

- Personal computer running Windows 98SE, Me, 2000, or XP.
- USB Port
- Pentium® 333 MHz or higher recommended
- Colour display monitor with high colour (16-bit) graphics
- 64MB RAM (128MB recommended).
- 200MB free disk space.
- CD-ROM drive
- Standard Mouse & Keyboard.

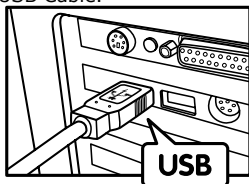
5 Transferring Pictures and Video To Your Computer

● Before you transfer pictures

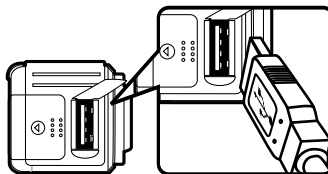
 **IMPORTANT!** - Before you transfer your pictures make sure you have installed the software from the CD.

● Connecting to your computer



Connecting with the USB Cable.



USB Series "A" Plug
Connects to your PC



USB Series "A" Plug Connects
to your **SPOX**

1. Turn the Camera Off.
2. Plug the labelled end  of the USB cable into the socket marked  on your computer. This is normally located on your computer hard drive. If the port is not labelled, see your computer user's guide.
3. Plug the other end of the USB cable into the port on your camera
4. Turn the camera on.

● Transferring & Viewing the Pictures on a computer

Transferring pictures to the computer

1. Turn the camera on.
2. Connect the camera to the USB cable
3. Start the PhotoStudio® 4.0 software.
Go to Start > Programs > Arcsoft Software Suite > PhotoStudio 4.0.
4. Select or create a new album to transfer your pictures to. File > Open Album > New Album and type in a new album name.
5. Select File > Select Source > TCG 201 Camera > Select. Select File > Acquire.
6. Select "All images" or the image(s) you wish to transfer and select the "Transfer" button.

Viewing the pictures

1. All the pictures selected have now been transferred into the PhotoStudio® Album you have chosen.
2. The pictures appear as thumbnail pictures on the screen.
3. View your pictures by double clicking on the thumbnail picture.

● Transferring & playing Video Clips on a computer

Transferring Video clips to the computer

1. Turn the camera on.
2. Connect the camera to the USB cable.
3. Start the PhotoStudio® 4.0 software. Go to Start > Programs > Arcsoft Software Suite > PhotoStudio 4.0.
4. Go to File > Acquire > Create AVI
5. The system will ask you to " Enter a base file for your Video files" Click the OK button.
6. A dialogue box will appear select a location on your computer hard drive and type a file name for your Video clip. Now click on the "Open" button
7. The computer will now process the Video clip into the file location described in 6.
8. The Video clip has now been stored on your computer.

Playing Video

Access the Video clip by double clicking on the Video file name. The Video will be automatically opened in Windows Media Player or other Media software already installed on your computer.

● Taking pictures from live video

1. Connect the camera to the computer and launch the ArcSoft VideoImpression™ 1.6 software.
2. Go to File > Source > TCG 201 Camera > Select
3. Select Acquire.
4. Select Video Camera
5. Position the camera to take picture and click on the "Transfer" button to take a picture from the live video.
6. Close the Photo taken. The computer will ask you whether to save the photo.
7. A dialogue box will appear select a location on your computer hard drive and type a file name for your photo clip. Now click on the "Save" button
8. The computer will now process the Photo clip into the file location described in 7.
9. The Photo clip has now been stored on your computer.

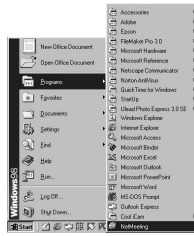
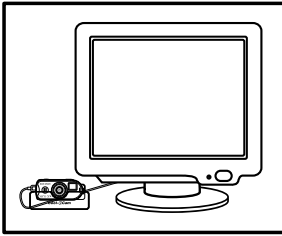
6 Using your camera as a Web Cam

• Setting up

1. Connect your **SPOX** to the USB cable on one end.
2. Connect your USB cable to an available USB port on your PC on the other end.
3. Put your **SPOX** on top of your PC monitor or another flat surface.
4. Connect your microphone (not included) to your audio card's external microphone connector.

• Making a call


1. Double click the "NetMeeting" icon on the desktop or select the "NetMeeting" icon from the Windows Start Menu.
2. Type in the IP address, computer name or telephone number for the person you want to call and press the "Place Call" button.
To find your own IP address, go to "Start" and click "Run". Type in "winipcfg" and click "OK", IP configuration window will appear and you can see your IP address.
3. If you need further help on how to use Microsoft® NetMeeting™, select the "Help" under the manual bar and choose the topic you need. Or you can visit the following website: <http://www.microsoft.com/windows/netmeeting>.



7 Troubleshooting Problems

The troubleshooting guide is designed to help you. If problems continue, please contact your local customer support hot-line.

● Troubleshooting

Symptom	Problem	Solution
I receive an error message when I am installing "My Camera Driver"	"My Camera Driver" does not load.	Shut down all other applications and attempt to reinstall the driver, or download the updated driver from www.spypen.com and install the updated driver. Check the USB controller in your BIOS if they are activated. If these does not work contact your national customer support representative.
I receive a message no image to download when I try to upload to my computer.	Connection failure.	Check all cables connections are secured.
I cannot run the My Camera Driver.	Conflict with another camera driver capture device.	If you have any other camera installed on your computer, remove the camera and it's driver completely from your system to avoid conflict with another camera or capture device.
LCD displays "  ".	This means there is insufficient power to upload images to your computer.	If you need to change batteries, and retain the images in your SPOX 's memory, ensure you are connected to a PC which is turned on via the USB cable, which will then draw power from the PC whilst you insert new batteries.
I cannot access any Funhouse's templates.	No CD in CD-ROM drive.	Put My Camera CD in the CD-ROM drive.
My CD Installation wizard does not work.	The auto installation file is switched to off or The CD-ROM is disconnected.	Go to the computer desktop. Right click on "My Computer". Click "Properties". Select "Device Manager". Double click on "CD-ROM", double click on "CD-R (normally the manufacturer's name. click on "Settings". Ensure "Auto insert notification" is ticked and the "disconnect" is ticked. If you change the settings the computer will ask you to restart your PC. Click "Yes".
I cannot activate my SPOX by pressing the Mode Button.	Insufficient battery power or batteries are missing.	Upload all images to your PC and replace batteries.
When I use my SPOX as a web cam, the quality of live video is very bad.	The " My Camera Driver " does not support the following three video formats: - ABYR 320 x 240 - ABYR 160 x 120 - ABYR 176 x 144	Select video formats other than the three formats that " My Camera Driver " does not support.

8 Getting Help

● Software Help

For Japan

ArcSoft Japan Support Center (Tokyo)
Tel: +81-03-3834-5256
Fax: +81-03-5816-4730
Web: <http://www.mds2000.co.jp/arcsoft>
E-mail: japan@arcsoft.com and
support@mds2000.com

For North America

ArcSoft HQ Support Center
(Fremont California, CA)
Tel: 1-800-762-8657 (toll free number)
Fax: 1-510-440-1270
E-mail: support@arcsoft.com

For China

ArcSoft China Support Center (Beijing)
Tel: 8610-6849-1368
Fax: 8610-6849-1367
E-mail: china@arcsoft.com

For North America

ArcSoft HQ Support Center
(Fremont California, CA)
Tel: 1-800-762-8657 (toll free number)
Fax: 1-510-440-1270
E-mail: support@arcsoft.com

For Oceania

ArcSoft Australian Support Center
(Baulkham Hills, New South Wales)
Tel: 61 (2) 9899-5888
Fax: 61 (2) 9899-5728
E-mail: support@supportgroup.com.au

For Europe/Middle East/Africa & Rest of the World

ArcSoft Europe Support Center (Ireland)
Tel: +353-(0) 61-702087
Fax: +353-(0) 61-702001
E-mail: europa@arcsoft.com

● Spypen Online Services and Support

Website: <http://www.spypen.com>

● Customer Support

plawa-feinwerktechnik GmbH & Co. KG

Bleichereistr. 18
73066 Uhingen - Germany
Helpline: +49 (7161) 93872-0 (English, Deutsch)
Website: www.spypen.com, www.plawa.de
Email: support@plawa.de

9 Appendix

● Technical Specifications

- Memory:
 - Internal memory - 16MB NAND Flash
- Image Performance for Video on Web-cam:
 - Up to 24fps (approx.) for 320 x 240 pixel
- Still Image Resolution:
 - High Resolution - 1280 x 1024 pixel (with 3:1 compression)
 - Normal Resolution - 1280 x 1024 pixel (with 6:1 compression)
 - Low Resolution - 640 x 512 pixel (with 6:1 compression)
- Storable Images(base on 16MB NAND Flash storage):
 - High Resolution - 10 images (approx.)
 - Normal Resolution - 30 images (approx.)
 - Low Resolution - 95 images (approx.)
- Zoom Rate: 2X Digital Zoom
- Video Clip:
 - Unlimited when connected to the computer via video capture software
 - Limited when using the Internal NAND Flash - 1 minute 40 seconds (approx.) at 320 x 240 pixel and 15 fps.
- File Format:
 - Still Image - Compression in JPEG format after download to PC via USB (depend on application used)
 - Video Clip - AVI format
- External Connector: USB
- Auto Power Off: After 60 seconds inactivity
- Self-timer: Electronic self-timer with 10 seconds delay
- Power Supply:
 - **SPOX**: USB Port, 2 x AAA Batteries (included)
- Operating System:
 - For Windows® Users: Microsoft® Windows® 98SE, Me, 2000 or XP

Camera Cautions

- Never immerse any part of the **SPOX** or its components into any fluid or liquid.
- Disconnect the **SPOX** from your PC before cleaning it.
- Remove dust or stains with a soft cloth dampened with water or neutral detergent.
- Do not place hot items on the surface of the **SPOX**.
- Do not attempt to open or disassemble the **SPOX**. This will affect any warranty claim.



WARNINGS!

- Batteries should be replaced by an adult.
- Non-rechargeable batteries are not to be recharged.
- Rechargeable batteries are to be removed from the camera before being charged (if removable).
- Rechargeable batteries are only to be charged under adult supervision (if removable).
- Different types of batteries or new and used batteries are not to be mixed.
- Only batteries of the same or equivalent type as recommended are to be used.
- Batteries are to be inserted with the correct polarity.
- Exhausted batteries are to be removed from the camera.
- The supply terminals are not to be short-circuited.
- Do not mix alkaline, standard (carbon-zinc), or rechargeable (nickel-cadmium) batteries.
- Do not dispose the batteries in fire.
- Batteries are to be removed from the camera when not in use.
- Do not use rechargeable batteries.

These instructions should be retained for future reference.



• Tips, Your Safety & Maintenance

Your Camera should only be operated within the following environmental conditions;

- 41 - 104° Fahrenheit; 5 - 40° Celsius
- 20% - 85% relative humidity, non condensing

Battery life or image quality may be affected outside these conditions

- NEVER immerse any part of the Camera or its accessories into any fluid or liquid.
- ALWAYS disconnect the Camera from your PC or TV before cleaning it.
- ALWAYS remove dust or stains with a soft cloth dampened with water or neutral detergent.
- NEVER place hot items on the surface of the Camera.
- NEVER attempt to open or disassemble Camera as this will affect any warranty claim.

• Regulatory Information

FCC Notice

This device complies with Part 15 of FCC Rules. Operation is subject to the following two conditions: (1) This device may not cause harmful interference, and (2) This device must accept any interference received, including interference that may cause undesired operation.

Warning: Changes or modifications to this unit not expressly approved by the party responsible for compliance could void the user's authority to operate the equipment.

NOTE: This equipment has been tested and found to comply with the limits for Class B digital device, pursuant to Part 15 of the FCC Rules. These limits are designed to provide reasonable protection against harmful interference in a residential installation. This equipment generates, uses and can radiate radio frequency energy and, if not installed and used in accordance with the instructions, may cause harmful interference to radio communications.

However, there is no guarantee that interference will not occur in a particular installation. If this equipment does cause harmful interference to radio or television reception, which can be determined by turning the equipment off and on, the user is encouraged to try to correct the interference by one or more of the following measures:

- Reorient or relocate the receiving antenna.
- Increase the separation between the equipment and receiver.
- Connect the equipment into an outlet on a circuit different from that to which the receiver is needed.
- Consult the dealer or an experienced radio/TV technician for help.

Shielded cable must be used with this unit to ensure compliance with the Class B FCC limits.

Under the environment with electrostatic discharge, the product may malfunction and require user to reset the product.