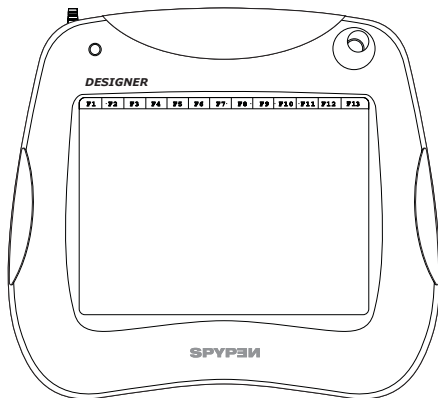


SPYPEN™

SPYPEN Designer



User's Manual

Introduction

Congratulations on purchasing the **SPYPEN Designer**. We hope you have many hours of fun with this amazing USB device for your PC.

The **SPYPEN Designer** is a complete drawing, painting and writing tool. It features a 512-level pressure-sensitive drawing pad, a cordless three-button mouse and cordless two-button pen. As a pressure-sensitive pad, the harder you press with the cordless pen, the thicker the ink, paint, crayon etc. appears on screen.

The software bundle should ensure many hours of fun. PhotoStudio® includes various tools to create fun drawing.

The software supplied includes Microsoft® NetMeeting™. The **SPYPEN Designer** supports NetMeeting™'s shared "Whiteboard" facility and allows you to share drawings and sketches over the Internet. There are also annotation and sketching tools, a signature verification program.

Table of Contents

Introduction	2
Table of Contents	3
1. System Requirements	4
2. Package Contents	4
3. Getting Started	5
3.1 Battery Installation	5
3.2 How to install the SPYPEN Designer Driver	6
3.3 How to connect Your SPYPEN Designer	7
3.4 How to install PenSoft	7
3.5 How to use PenSoft	7
3.6 How to install PhotoStudio® 2000	12
3.7 How to adjust the cordless mouse and pen settings	12
3.8 How to use PhotoStudio® 2000	14
3.9 How to install Microsoft® NetMeeting™	15
3.10 How to use Microsoft® NetMeeting™	16
4. Customer Support	17
5. Troubleshooting	28
6. Battery Guidance	29
7. Technical Specifications	20
8. FCC Notice	21

1. System Requirements

Compatible with Microsoft® Windows® 98, Windows® ME, Windows® 2000 or XP

- Intel® Pentium® II 333Mhz or equivalent processor
- 128MB RAM
- USB Port
- CD-ROM Drive
- Colour Monitor with minimum 16-bit colour graphic capability or higher
- Standard mouse and keyboard

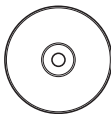
2. Package Contents



Tablet



Cordless Mouse

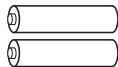


SPYPEN Designer Software CD-ROM

(Includes **Art Pad II Driver**, PhotoStudio® 2000, Pen Soft, Microsoft® NetMeeting™ and Acrobat® Reader)



User's Manual



2 x AAA Batteries

3. Getting Started

3.1 Battery Installation

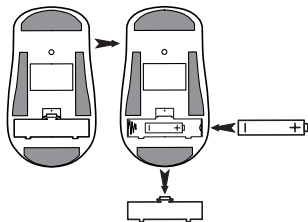
Cordless Mouse

1. Open the battery door on the back of the cordless mouse. Insert the 1 x AAA alkaline battery into the battery compartment. (Make sure you follow the correct polarity (+) (-) as indicated.)
2. Close the battery door.

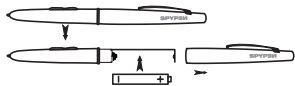
Cordless Pen

1. Carefully ease the 2 pen halves apart. Insert 1 x AAA alkaline battery into the battery compartment. (Make sure you follow the correct polarity (+) (-) as indicated.)
2. Slide the 2 pen halves together ensuring the raised area on both halves is lined up.

Cordless Mouse



Cordless Pen



3.2 How to install the Art Pad II Driver



Note:

We recommend **NOT TO CONNECT YOUR USB SPYPEN Designer UNTIL YOU HAVE INSTALLED THE Art Pad II Driver SOFTWARE**. Ensure you have inserted your batteries in both the cordless pen and mouse before **SPYPEN Designer** installation. (see Section 3.1 for battery installation)

3.2.1 Installing your Art Pad II Driver

1. Insert the CD-ROM disk into the CD-ROM drive and close the CD ROM drawer.
2. An installation wizard will automatically launch.
3. Click "**Art Pad II Driver**" icon.
4. Follow the instructions presented on the screen to complete the installation.
5. The **Art Pad II Driver** files will begin to install to the proper location.
6. Installation will prompt you to plug in your USB tablet. Connect your **SPYPEN Designer's** USB connector into an available USB port on your computer. (See Section 3.3)
7. Microsoft® Windows® will detect your newly installed **SPYPEN Designer** and will proceed with the final steps of the installation.
8. You need to restart your computer to complete the installation.
9. Then connect your **SPYPEN Designer** to your computer please refer to section 3.3.
10. The Green LED on the **SPYPEN Designer** surface will flash to denote that the surface is active when used with the pen and mouse.



Tips! Leaving the mouse on the **SPYPEN Designer** will slow down the access of other files and programs or starting your computer.

3.2.2 To Uninstall the Art Pad II Driver

1. Go to Start -> Programs-> **SPYPEN Designer** -> Uninstall -> Ok
2. Follow the on screen instructions.




Note:

If the setup screen doesn't appear after loading the CD, then you can manually start it by double-clicking the "My Computer" icon on your desktop, then double-clicking the icon for the CD-ROM drive. When the CD-ROM window opens, double-click the "Autorun" icon.

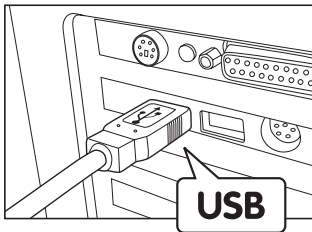
3.3 How to connect Your SPYPEN Designer

For the fastest and easiest installation of the **SPYPEN Designer**, we recommend NOT TO CONNECT YOUR USB UNTIL YOU HAVE INSTALLED THE **Art Pad II Driver** SOFTWARE.

Simply plug in the USB cable to the USB port on your PC or Notebook device.


The USB port can be found on the front or back panel of your PC or Notebook device. Look for this symbol  next to the USB connection port.

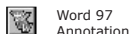
(Also see your PC operating manual for the location of your USB connection port.)



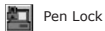
3.4 How to install PenSoft

PenSoft provides tools to add "Inks" (geometrical shapes, handwriting, signatures) to documents. This is useful if you want to make a document (e.g. an e-mail) more personal, authentic, expressive, as well as impressive.

1. Insert the CD-ROM disk into the CD-ROM drive and close the CD-ROM drawer.
2. An installation wizard will automatically launch.
3. Click "**PEN SOFT**" icon.
4. Follow the instructions presented on the screen to complete the installation.
5. If you need further help on using Pen Soft, simply double click the file "Document" under the Pen Soft folder.
6. If installation is successful, the following icon  will appear on the desktop.



3.5 How to use PenSoft



Handwriting easy set up instructions

Turn your handwriting, signatures and geometrical shapes into e-mail and word processed documents by using your own handwriting that is cleverly recognised and turned into typed text. Some patience is initially required when programming in your own handwriting style.




Letters are automatically kept in the "Learn" window, ensure the toolbar is set to the mouse/pen icon. Access the learn window by pressing the 3rd from left icon on the toolbar. Your letters are kept here, over type into the box below named "Input text here" Select the "insert" key to record the letter.

- Step 1 Ensure you have installed Adobe® Acrobat® Reader to print out further software instructions supplied on the CD or download and print from websites (<http://www.adobe.com/acrobat>) supporting the software.
- Step 2 Enter the control panel to adjust your mouse & pen button settings. Go to Start > Setup > Control Panel > Tablet Settings.
- Step 3 Go to handwriting recognition. Go to Start > Programs > Pensoft > Handwriting recognition.

Handwriting recognition

The Pensoft toolbar will appear.



Select the far L/H toolbar  or  or  icon to toggle between mouse and pen operation. A shortcut for this is to select the F11 key. With the icon selected to pen operation open your word processing document (eg, MS Word) and with the pen and **SPYPEN Designer** surface write individual letters which will appear on screen.

We recommend you write the alphabet (A-Z) to check out which letters are recognised using your own unique handwriting. Use capital letters first and then lower case letters.

TIP! The larger you write on screen the software will turn into capital letters and visa versa for small writing. Please practice this.

Step 4 For some letters the software may have difficulty recognising using your own unique handwriting, so you will have to add some letters to the memory database. This is done by the following procedure. Letters are automatically kept in the "Learn" window. Ensure the toolbar is set to mouse/pen icon. Access the learn window by pressing the 3rd from left icon on the toolbar. Your letter are kept here, overtype into the box below named "Input text here" Select the "insert" key to record the letter style. As your handwriting will vary slightly several versions of your letters may need to be stored in the database.

Auto signature

Go to Start > Programs > Pensoft > Inking. A toolbar will appear on screen. Select "setup" for the toolbar and make any changes to your signature settings. Select "Start" and with the pen on the **SPYPEN Designer** surface write your signature. Your signature will appear on screen with the settings you have chosen. Select "File" and "Save as", this will allow you to recall your signature from file and drop into for example word processing and e-mail documents. For further detailed operating instructions and details, go to Start > Programs > Pensoft > Document. The relevant sections are presented on the left side of the page.

Screen Savers

Produce your own unique screen savers using **SPYPEN Designer** and the software PhotoStudio® 2000 by going through the following process;

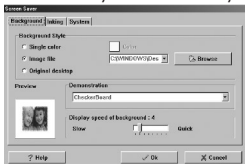
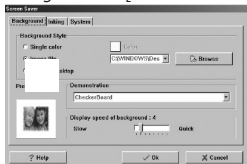
Quick set up

Step 1 Go to Start > Programs > PhotoStudio 2000 > PhotoStudio 2000 > File > New.
Produce your screensaver background design.

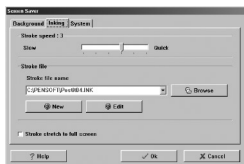
Step 2 Go to File > save as > Desktop and save file type as _____.BMP

Step 3 Go to Start > Settings > control panel > Display > Screen Saver > Screen Saver set to "Scrsav" > Select Settings >

Background > [select Browse and select the file you created on your desktop]



Inking (stroke file) > New > [draw by selecting the tools by pushing your cursor to the bottom of your screen] > save as _____.INK.



Step 4 In the screen saver settings, adjust the desired wait time for your screen saver to operate, and select "apply" to save your settings. Go to Settings < System and adjust Pause time (secs) if your screen saver does not operate.



Important!


Remove the Mouse & Pen away from the **SPYPEN Designer** surface for the screen saver to operate. Repeat steps to produce another unique screen saver.



Penlock

PenLock provides security for your files. PenLock will work with any Microsoft Word or Notepad document.

You can type your password or use your signature with the **SPYPEN Designer** pen to decode and unlock a file. If the password or signature is recognised then you can see the document in NOTEPAD. After your working are over and quit NOTEPAD. PenLock will encode the file automatically.

Step 1 Go to Start > Programs > Pensoft > Penlock. Insert CD-Key number which could be found on the back of your CD-ROM cover. An icon called "file encrypt system" will appear in your bottom toolbar on your PC. (by the clock) 

Step 2 Click on the File encrypt system icon and select "setup"

Step 3 The set up center window will appear. Click on all 3 buttons in the set up window to keep files;
a) keep encrypted file after decrypt.
b) Small button on caption.
c) Load system while startup windows.

Set default encrypt method to "Data encryption standard" (DES) for fastest response. Set sign level during practice stages to most tolerant. You can adjust this setting as you become more proficient at signatures with the **SPYPEN Designer** pen.

Step 4 Select the "Ink" window in the set up center to change your ink widths, styles etc

Step 5 Select the "Startup" window in the set up center.

Tick the auto login box to make the system ask for your password every time you switch on your PC. Enter your user name in the account box and your secret password in the password box.



Important!

Make sure if more than one user uses your PC they can gain access.!!!

Step 6 Select the "Explorer" window in the set up center.

Practice

Practicing & Using PenLock

The follow steps will help you to familiarise yourself with PenLock;

1. For an example we will encrypt a file named test under the C:\ directory.
First, you must produce a test word document, call it "test" and save on your C Drive. Access security explorer via the file encrypt system icon (next to clock) highlight the file you want to encrypt and click the "Encrypt" button. Type your password and confirm or signature twice.
Press the Ok button to encrypt the file and PenLock password or signature that "test.doc" file is now encrypted (coded). Double click on the encrypted file to see the secret coding.
2. Decrypt test.doc file.
In Security Manager, select decrypt button and type your password or signature. Press Ok button code to see the file.
3. Forgotten password: If you forget your password or signature, please follows these steps.
Put the **SPYPEN Designer** CD (supplied) disk in the CD-ROM. Go through the Pensoft set up and Click the Security Explorer icon.
Select the encrypted file. Click the [Rescue] icon, then type the Pensoft CD key code on the reverse of your CD wallet. You will see the password and ink of the encode file. Select the files that You want to decrypt. Type the install serial number and you can see the original password and signature.
Please remember the password and use it to decode your files.
Select the encrypted file. Click the [Decrypt] icon, then type the install password. The file will be decrypted successfully.



Important!

The Pensoft program has an "e document" file for Traditional Chinese Language support. This has a 3.9 MB internet download, this download is not required for European customer support.

Every file that you want to encode has size limit. The file size cannot be over 20MB and no less then 16 bytes.

For further information on the instructions for use go to File > Programs > Pensoft > e document. The various sections we have highlighted in these quick set up instructions are listed down the left hand side.


3.6 How to install PhotoStudio® 2000

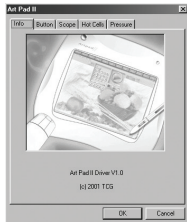
PhotoStudio® 2000 is a full-featured, easy-to-use digital image-editing program that provides a complete set of photo editing and retouching tools, plus a wide selection of special effects and enhancements. Its powerful features include a wide variety of input and output options, layers, multiple undo and redo functions, image management tools, editable text, multiple file format support and a lot more.

1. Insert the CD-ROM disk into the CD-ROM drive and close the CD-ROM drawer.
2. An installation wizard will automatically launch.
3. Click "PhotoStudio" icon.
4. Choose your preferred language.
5. Follow the instructions presented on the screen to complete the installation.



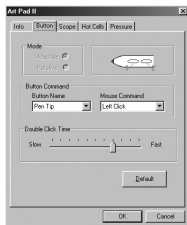
3.7 How to adjust the cordless mouse and pen settings

- Step 1 Double click on the "SPYPEN Designer Manager" icon  on the lower toolbar of the PC desktop. Your **SPYPEN Designer Manager** will appear.



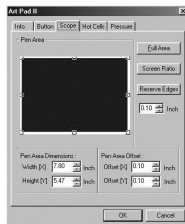
Pen Settings

- Step 2 Select the "Buttons" Tab on the **SPYPEN Designer Manager**. Decide what functions you want your Pen to perform when acting as a mouse. Your Pen tip always acts as a left click.



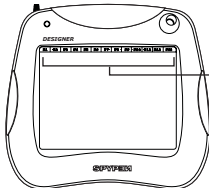
Select the Scope Tab (Adjust Working Area)

- Step 3 Adjust the **SPYPEN Designer** working surface to suit your own needs. Either drag the blue area with the mouse to adjust the sizes, click on the buttons FULL AREA/SCREEN RATIO/RESERVE EDGES or type in the sizes in the PEN AREA and PEN AREA OFFSET BOXES. Press OK to confirm settings.

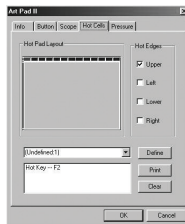


Select the Hot Cell Tab

- Step 4 Set your F1 - F13 hot cells as shortcuts to access favourite websites, program or send emails.



Hot Cells



Click the Define button and select either;

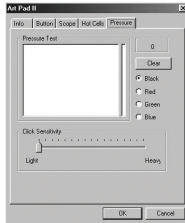
- RUN to set a hot cell to find program folder or file
- INTERNET to set a hot cell to access directly to a favorite website or setup an email.
- HOT KEY to set a hot cell to act as common functions around the computer (eg. save, copy, paste)

Use the pen on the Hot Cell to simply activate the hot cell.

Select the Pressure Tab

- Step 5 Use the Pressure Section to practice test your cordless pen pressure settings.

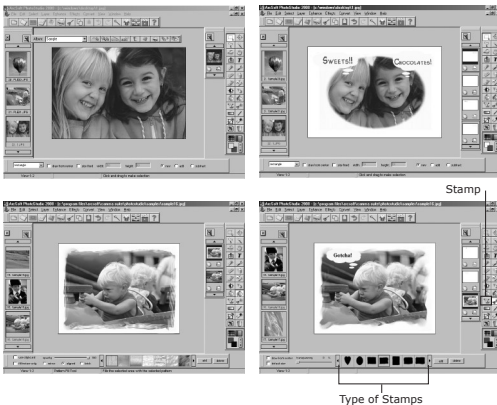
Select the colour and adjust the Pen button sensitivity with the Click Sensitivity light - heavy scale. Select OK to confirm setting.



3.8 How to use PhotoStudio® 2000

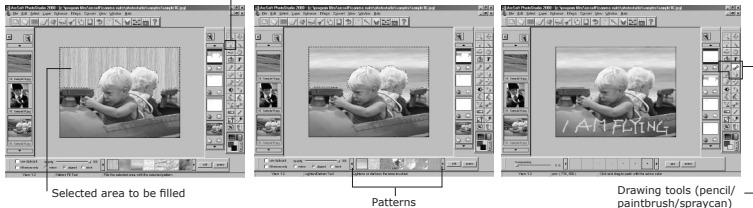
Editing your photo using your Tablet

Start > Programs > PhotoStudio 2000 > PhotoStudio 2000 > File > Open. Using the toolbar to create fancy photo edges and using your tablet to brighten up your photo as shown below.



You could also select area [background] using the "Freehand select" and select "pattern fill" icon and fill in pattern.

Freehand select



Draw with your tablet using PhotoStudio® Software

Your can simply use the drawing tools to draw your own picture.



3.9 How to install Microsoft® NetMeeting™

NetMeeting™ provides the most complete conferencing solution for the Internet and corporate intranet. Using your **SPYPEN Designer** , PC and the Internet, you can now use the shared Whiteboard facility in NetMeeting and write to your friends in real-time!

1. Insert the CD-ROM disk into the CD-ROM drive and close the CD ROM draw.
2. An installation wizard will automatically launch.
3. Click the "Microsoft® NetMeeting™" icon.
4. Follow the instructions presented on the screen to complete the installation.
5. For further installation details, please visit the following website:
<http://www.microsoft.com/windows/netmeeting>



Note:

- You need to enter your name, your e-mail address and country details during installation.
- You need to adjust the playback volume and your record volume.



Note:

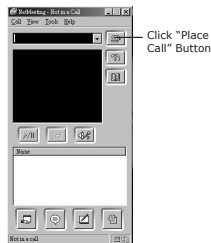
If the setup screen doesn't appear after loading the CD, then you can manually start it by double-clicking the "My Computer" Icon on your desktop, then double-clicking the icon for the CD-ROM drive. When the CD-ROM window opens, double-click the "Setup" icon.

3.10 How to use Microsoft® NetMeeting™

1. Make sure your **SPYPEN Designer** is connected to your PC.
2. Put your **SPYPEN Designer** on flat surface.
3. Connect your microphone (not included) to your audio card's external microphone connector and web camera (not included) to your computer.
4. Double-click the "NetMeeting" icon on your desktop or select the "NetMeeting" icon from the Windows Start Menu.

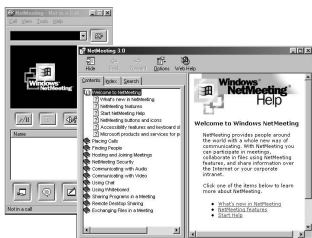


5. Type in the IP address, computer name or telephone number of the person you want to call and press the "Place Call" button.



To find your own IP address, go to "Start" and click "Run". Type in "winipcfg" and click "OK", IP configuration window will appear and you can see your IP address.

6. If you need further help on how to use Microsoft® NetMeeting™, select the “Help” under the manual bar and choose the topic you need. Or you can visit the following website:
<http://www.microsoft.com/windows/netmeeting>



4. Customer Support

plawa-feinwerktechnik GmbH & Co. KG

Bleichereistr. 18

73066 UHINGEN - GERMANY

Helpline: +49 (7161) 93872-0 (English, Deutsch)

Website: www.spypen.com, www.plawa.de

Email: support@plawa.de

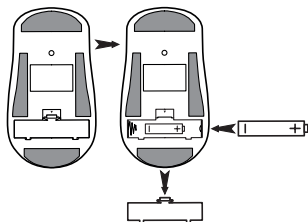
5. Troubleshooting

The troubleshooting guide is designed to help you. If problems continue, please contact your local customer support hot-line. See your registration card for helpline contact details.

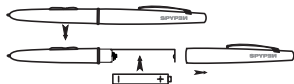
Symptom	Problem	Solution
My cordless mouse or pen will not work.	The battery in your cordless mouse or pen is dead.	Replace batteries.
	Your SPYPEN Designer is not properly connected via the USB cable or the cable is not properly connected to.	Check the USB cable connection to your PC.
	There could be a problem with the USB controller software, human interface device, ports or the USB connected to your SPYPEN Designer .	<p>Check the status of your system by checking in your PC Device Manager:</p> <ol style="list-style-type: none"> 1. Single mouse click on "My Computer" on your desktop. 2. Right mouse click. 3. Select "Properties" then "Device Manager". 4. Select "+" on "Human Interface Devices", "HID-compliant device" should be displayed. If this is not displayed, your PC has not recognised the SPYPEN Designer Cordless Pen. This verifies that the SPYPEN Designer has been properly connected to your PC, the problem most likely stems from the cable or ports or USB controller that connects the SPYPEN Designer to your PC. 5. Select "+" on "Human Interface Devices", "HID-compliant device" should be displayed. If this is not displayed, your PC has not recognised the SPYPEN Designer Cordless Mouse. This verifies that the SPYPEN Designer has been properly connected to your PC, the problem most likely stems from the cable or ports or USB controller that connects the SPYPEN Designer to your PC. Select "+" Universal Serial Bus Controller (USB) if "!" or "?" appear there maybe a problem with the USB controller. Or if Universal Serial Bus Controller cannot be found consult your PC stockists helpline. 6. Select "+ Ports". If "!" or "?" appear there maybe a problem with the port connection between the cable and your PC. Consult your PC stockists helpline. 7. Check to see if there is any "Unknown device" listed. Your PC may be confused where to locate the files produced during the driver installation. Highlight the "Unknown device" and select "remove".
	You may have installed the software before installing the batteries in the SPYPEN Designer Cordless Pen and Mouse.	Uninstall the SPYPEN Designer Driver (see Section 3.2.2). Insert batteries and re-install SPYPEN Designer Driver, follow the on-screen instructions.

6. Battery Guidance

Cordless Mouse



Cordless Pen



Important Note:

We strongly recommend that you do not use rechargeable batteries as this may affect the performance of your **SPYPEN Designer** (mouse and pen).



WARNINGS!

- Batteries should be replaced by an adult.
- Non-rechargeable batteries are not to be recharged.
- Rechargeable batteries are to be removed from the cordless mouse and pen before being charged (if removeable).
- Rechargeable batteries are only to be charged under adult supervision (if removeable).
- Different types of batteries or new and used batteries are not to be mixed.
- Only batteries of the same or equivalent type as recommended are to be used.
- Batteries are to be inserted with the correct polarity.
- Exhausted batteries are to be removed from the **SPYPEN Designer** (mouse and pen).
- The supply terminals are not to be short-circuited.
- Do not mix alkaline, standard (carbon-zinc), or rechargeable (nickel-cadmium) batteries.
- Do not dispose of the batteries in fire.
- Batteries are to be removed from the **SPYPEN Designer** (mouse and pen) when not in use.
- Do not use rechargeable batteries.

These instructions should be retained for future reference.

7. Technical Specifications

Active Area (WxL)	8"W x 6"L (152mm x 114mm)
Macro Cells	13 Macro Function Keys
Physical Size (WxLxT)	10.5"W x 12"L x 3/8"T (265mm x 300mm x 10mm)
Power Consumption	0.35W
Power Supply	USB port (DC 5V regulated)
Weight	500g (with cable)
Origin Position	Upper Left
Resolution	Maximum 4064 lpi / 160 lppmm
Accuracy	0.25mm(0.01 inch)
Maximum Pressure Levels	512
Maximum Reading Height	8mm (0.4")
Communication Interface	USB Port
Connector	USB low speed connector
Batteries	2 x AAA Alkaline Batteries (included)
Software Bundled	SPYPEN Designer Manager , PhotoStudio® 2000, Pen Soft, Microsoft® NetMeeting™ and Acrobat® Reader.



SPYPEN Designer Cautions

- Never immerse any part of the **SPYPEN Designer** or its components into any fluid or liquid.
- Disconnect the **SPYPEN Designer** from your PC before cleaning it.
- Remove dust or stains with a soft cloth dampened with water or neutral detergent.
- Do not place hot items on the surface of the **SPYPEN Designer**.
- Do not attempt to open or disassemble the **SPYPEN Designer**. This will affect any warranty claim.

8. FCC Notice

This device complies with Part 15 of FCC Rules. Operation is subject to the following two conditions: (1) This device may not cause harmful interference, and (2) This device must accept any interference received, including interference that may cause undesired operation.

Warning: Changes or modifications to this unit not expressly approved by the party responsible for compliance could void the user's authority to operate the equipment.

NOTE: This equipment has been tested and found to comply with the limits for Class B digital device, pursuant to Part 15 of the FCC Rules. These limits are designed to provide reasonable protection against harmful interference in a residential installation. This equipment generates, uses and can radiate radio frequency energy and, if not installed and used in accordance with the instructions, may cause harmful interference to radio communications.

However, there is no guarantee that interference will not occur in a particular installation. If this equipment does cause harmful interference to radio or television reception, which can be determined by turning the equipment off and on, the user is encouraged to try to correct the interference by one or more of the following measures:

- Reorient or relocate the receiving antenna.
- Increase the separation between the equipment and receiver.
- Connect the equipment into an outlet on a circuit different from that to which the receiver is needed.
- Consult the dealer or an experienced radio/TV technician for help.

Shielded cable must be used with this unit to ensure compliance with the Class B FCC limits.