

# User's Manual

## 1. Introduction

Congratulations on purchasing the ACTOR. Using the latest innovations in technology the **ACTOR** offers fun, affordable and easy to use digital imaging.

Although you probably want to get started right away, please take a few minutes to read this guide and familiarise yourself with your new **ACTOR**. Your new **ACTOR** will take approximately 16 Hi-Res(High Resolution), 64 Normal-Res (Normal Resolution) & 128 Low-Res (Economy Resolution)images, which you upload to your PC (Personal Computer) running Windows® 98SE and Windows® Me via the USB (Universal Serial Bus) port.

You can also use your **ACTOR** to capture not only snaps of your family and friends, but also video with audio and audio of them in action. You can also use **ACTOR** as an audio recorder.

Your ACTOR can also be used as a Web Cam. If you have an internet connection and microphone (not supplied) you can chat face-to-face with friends and colleagues, conferencing in real time.

Memory for storing digital images and video clips can be added by inserting a SmartMedia™ Card (SMC) in the **ACTOR** Memory card slot provided. When you have taken your images, the **ACTOR** will wait for 60 seconds and then automatically switch to Stand-by mode to preserve battery life.

For **ACTOR** User's Manual update information, please visit <http://www.spypen.com>.

# WARRANTY

## WARRANTY TIME PERIOD

plawa warrants this camera to be free from malfunctions and defects in both materials and workmanship for one year

## WARRANTY REPAIR COVERAGE

In case the products is defective within the warranty time periode plawa will replace or repair the camera.

In case of the following plawa will replace or repair the camera at customers cost even though it is still under warranty:

- Mishandled by user
- Damaged by modification
- Case of omission, correction without confirmation, loss of warranty card, or product does not show serial number.

Date of purchase: \_\_\_\_\_ Serial number: \_\_\_\_\_

Sales Point (Stamp of dealer):

Keep the warranty card in a safe place. Will not be reissued in case of lost.

## 2. Table of Contents

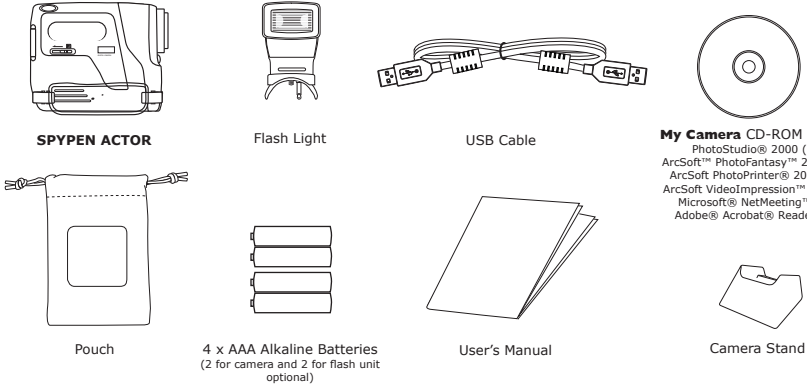
1.	Introduction	1
2.	Table of Contents	2
3.	System Requirements	3
4.	Package Contents	3
5.	Software Installation	3
	For Windows® Users:	
5.1	How to install <b>My Camera Driver</b>	3
5.2	How to install ArcSoft® Software	4
5.3	How to install Microsoft® NetMeeting™	5
5.4	How to install Adobe® Acrobat® Reader	5
6.	Battery Installation	5
6.1	Batteries Replacement	5
7.	Getting to Know Your <b>SPYPEN ACTOR</b>	6
7.1	Shutter Button	6
7.2	Flip out Viewfinder	6
7.3	Microphone	7
7.4	Mode Button	7
7.5	LCD Display	7
7.6	Power	7
7.7	SPYPEN Flash Unit (INCLUDED)	7
7.8	<b>ACTOR</b> Stand	8
7.9	SmartMedia™ Card Slot	8
8.	Getting Started	8
8.1	Switching the ACTOR On from Stand-by Mode	9
8.2	Taking an Image	9
8.3	Video Clip with Audio Mode	9
8.4	Self-Timer Mode	9
8.5	Audio Recording Mode	9
8.6	Deleting the Last Image/Last Movie Clip with Audio/Last Audio Clip	9
8.7	Changing the Image Resolution	9
8.8	Flash Light Mode (Included)	10
8.9	Turning your <b>ACTOR</b> OFF	10
9.	Connecting your <b>ACTOR</b> to your Computer	10
10.	How to Use Other Softwares	10
	For Windows® Users:	
10.1	How to use PhotoStudio® 2000	10
10.2	How to use ArcSoft PhotoFantasy™ 2000	11
10.3	How to use ArcSoft PhotoPrinter® 2000	12
10.4	How to use ArcSoft VideoImpression™ 1.6	12
10.6	How to use Microsoft™ NetMeeting®	13
10.7	How to use Adobe® Acrobat® Reader	13
10.8	How to update DirectX	13
10.9	How to upload stored image/Video Clip/Audio Clip by using Windows® application "Imaging"	13
10.10	How to capture the video image	15
11.	Customer Support	16
12.	ArcSoft® WorldWide Customer Support	16
13.	Troubleshooting	17
14.	Battery Guidance	18
15.	Technical Specifications	19
16.	FCC Notice	20

### 3. System Requirements

#### For Windows® Users

- Compatible with Microsoft® Windows® 98SE and Me
- Pentium® II 333Mhz or higher recommended
- 128MB RAM
- USB Port
- 200MB free disk space
- CD-ROM Drive
- Colour Monitor with High Colour 800 x 600 resolution at 16-bit graphics
- Standard mouse and keyboard

### 4. Package Contents



### 5. Software Installation

#### For Windows® Users:

#### 5.1 How to Install My Camera Driver

##### 5.1.1 How to Install My Camera Driver

"My Camera Driver" should be installed first.

1. Insert the CD-ROM disc into the CD-ROM drive and close the CD-ROM drawer.
2. An installation wizard will automatically launch.
3. Click "**My Camera Driver**" icon.
4. Follow the instructions presented on the screen to complete the installation.
5. Click "OK" to restart your computer and wait for your PC to restart automatically.

#### Notes:

- If the setup screen doesn't appear after loading the CD, then you can manually start it by double-clicking the "My Computer" icon on your desktop, then double-clicking the icon for the CD-ROM drive. When the CD-ROM window opens, double-click the "INSTALL\_E.exe" file.

##### 5.1.2 Installing the My Camera Driver in Windows® 98SE

After completing the camera setup from your installation CD, plug your camera into the USB port on your computer. There are four camera components that will be installed for your camera. Follow the steps below for a proper installation.

Your original Windows Installation CD *MAY* be requested. Insert the CD into your CD-ROM Drive when requested.

1. Upon plugging in your camera to the USB Port the "Add New Hardware Wizard" will appear to guide you through installation of the first camera component, the 'USB Audio Device'.
2. You will be asked "What would you like to do?" Choose to "Search for the best driver..." and press the enter key.

#### Important! The Windows Install CD may be required at this time.

3. The "Add New Hardware Wizard" should automatically find and install the drivers for the 'USB Audio Device'. Choose <Finish> to continue installing the rest of the camera components.

##### 5.1.3 Installing the My Camera Driver in Windows® ME

After completing the camera setup from your installation CD, plug your camera into the USB port on your computer. There are four camera components that will be installed for your camera. Follow the steps below for a proper installation.

1. Upon plugging in your camera to the USB Port the "Add New Hardware Wizard" will appear to guide you through installation of the first camera component, the 'USB Audio Device', which is the microphone built in to your camera.
2. You will be asked "What would you like to do?" Choose to "Automatically Search" for the drivers and press the enter key.
3. The "Add New Hardware Wizard" should automatically find and install the drivers for the 'USB Audio Device'. Choose <Finish> to continue installing the rest of the camera components.



#### 5.1.4 Uninstalling your My Camera Driver

There are two tasks that need to be done to uninstall the ACTOR driver. Firstly, remove the device from the Operating System through the Device Manager. To do this:

1. Make sure the ACTOR is connected to the host computer.
  2. Open the System Control Panel and go to the Device Manager.
  3. Open the "Imaging Devices" section.
  4. Click once on the "Still Camera Interface" that appears in the "Imaging Devices" list.
  5. Remove the "Still Camera Interface":
    - In the Windows® 98SE and ME, you can select the "REMOVE" button on the bottom of the Device Manager window.
  6. The Windows Device Manager will ask you to confirm that you want to uninstall the camera.
  7. Click once on the "Video Camera Interface" that appears in the "Imaging Devices" list.
  8. Remove the "Video Camera Interface":
    - In the Windows® 98SE and ME, you can select the "REMOVE" button on the bottom of the Device Manager window.
  9. The Windows Device Manager will ask you to confirm that you want to uninstall the camera.
  10. Open the "Universal Serial Bus controllers" section.
  11. Click once on the "SPYPEN ACTOR" that appears in the "Universal Serial Bus controllers" list.
  12. Remove the "USB Composite Device":
    - In the Windows® 98SE and ME, you can select the "REMOVE" button on the bottom of the Device Manager window.
  13. The Windows Device Manager will ask you to confirm that you want to uninstall the camera.
  14. Close Device Manager.
  15. Unplug the camera.
- The second part is to run the driver uninstall application that was created when the drivers were originally installed.
16. Open to the "Add/Remove Programs" located in the control panel.
  17. Select ACTOR from the list and click on the remove button. Follow the on-screen instructions.

You have removed the driver files and associated registry entries. To reinstall your camera, run the driver installation setup.exe and then plug the camera into your USB port.



#### Notes:

Uninstalling your **My Camera Driver** does not delete your album folders and therefore all images transferred into your default or created albums will be preserved. You will be able to access these folders on your system desktop.

## 5.2 How to Install ArcSoft® Software

### Introduction to the Software

#### PhotoStudio® 2000

PhotoStudio® 2000 is a full-featured, easy-to-use digital image-editing program that provides a complete set of photo editing and retouching tools, plus a wide selection of special effects and enhancements. Its powerful features include a wide variety of input and output options, layers, multiple undo and redo functions, image management tools, editable text, multiple file format support and a lot more.

#### ArcSoft PhotoFantasy™ 2000

ArcSoft PhotoFantasy™ is an image entertainment application that enables users to create "photo fantasies" by combining their personal photos with a wide variety of fantasy backgrounds. Users can get their own images from digital cameras, scanners, disk drives and Photo CDs, and seamlessly combine them with just a few clicks of the mouse. The fantasy backgrounds include fictional characters, classic works of art, Olympic heroes, 50's funnies, bathing beauties, muscle men and a lot more.

#### ArcSoft PhotoPrinter® 2000

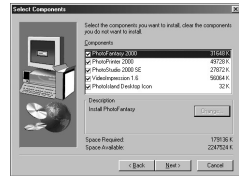
ArcSoft PhotoPrinter® is an easy-to-use printing utility that enables the user to layout and print multiple images in different sizes quickly and easily on a single sheet of paper. The program offers a large selection of printing templates, including Kodak Digital Science Inkjet Photo Paper Templates and Avery-brand paper products. It also includes commonly used image-editing tools and a wide selection of templates for frames, edges and backgrounds for enhancing images.

#### ArcSoft VideoImpression™ 1.6

ArcSoft VideoImpression™ is an easy-to-use video and image editing software program. The program enables users to create and edit new videos using existing video and image files - making desktop video presentations for home, business, and the Web.

### 5.2.1 How to Install ArcSoft® Software

1. Reinsert the CD-ROM disc into the CD-ROM drive and close the CD-ROM drawer.
2. An installation wizard will automatically launch.
3. Click the "ArcSoft® Software" icon.
4. Select the language for the installation and click "OK".
5. Follow the on-screen prompts.
6. Select the software you want or you do not want installed by clicking on the tick boxes next to the software title. Click "Next >" to continue.
7. Follow the instructions presented on the screen to complete the installation.



#### Notes:

Don't worry if you made a mistake and want to add in ArcSoft® titles you did not tick. Reinsert the CD-ROM and follow steps 1 - 6 ticking only the software you want to add.

### 5.3 How to install Microsoft® NetMeeting™

NetMeeting™ provides the most complete conferencing solution for the Internet and corporate intranet. Powerful features let you communicate with both audio and video, collaborate on virtually any Windows-based application, exchange graphics on an electronic whiteboard, transfer files, use the text-based chat program, and much more. Using your PC and the Internet, you can now hold face-to-face conversations with friends and family around the world.

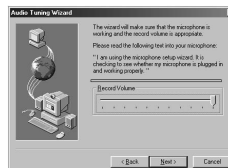
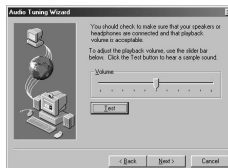
#### To install the Microsoft® NetMeeting™:

1. Insert the CD-ROM disc into the CD-ROM drive and close the CD-ROM drawer.
2. An installation wizard will automatically launch.
3. Click the "Microsoft® NetMeeting™" icon.
4. Follow the instructions presented on the screen to complete the installation.
5. You will have a choice during installation to place a desktop icon on your desktop for easy access directly to the software.
6. For further installation details, please visit the following website:  
<http://www.microsoft.com/windows/netmeeting>



#### Notes:

- You need to enter your name, your e-mail address and country details during installation.
- You need to adjust the playback volume and your record volume.



### 5.4 How to install Adobe® Acrobat® Reader

Adobe® Acrobat® Reader lets you view and print Adobe Portable Document format (PDF) files on all major computer platforms, as well as fill in and submit Adobe PDF forms online.

#### To install the Adobe® Acrobat® Reader:

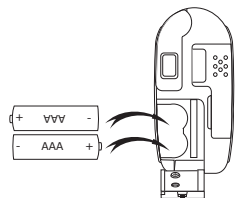
1. Reinsert the CD-ROM disc into the CD-ROM drive and close the CD-ROM drawer.
2. An installation wizard will automatically launch.
3. Click the "Adobe® Acrobat® Reader 4.05" icon.
4. Follow the instructions presented on the screen to complete the installation.
5. Visit <http://www.adobe.com/> for all your FAQ's, tips and technical support.



## 6. Battery Installation

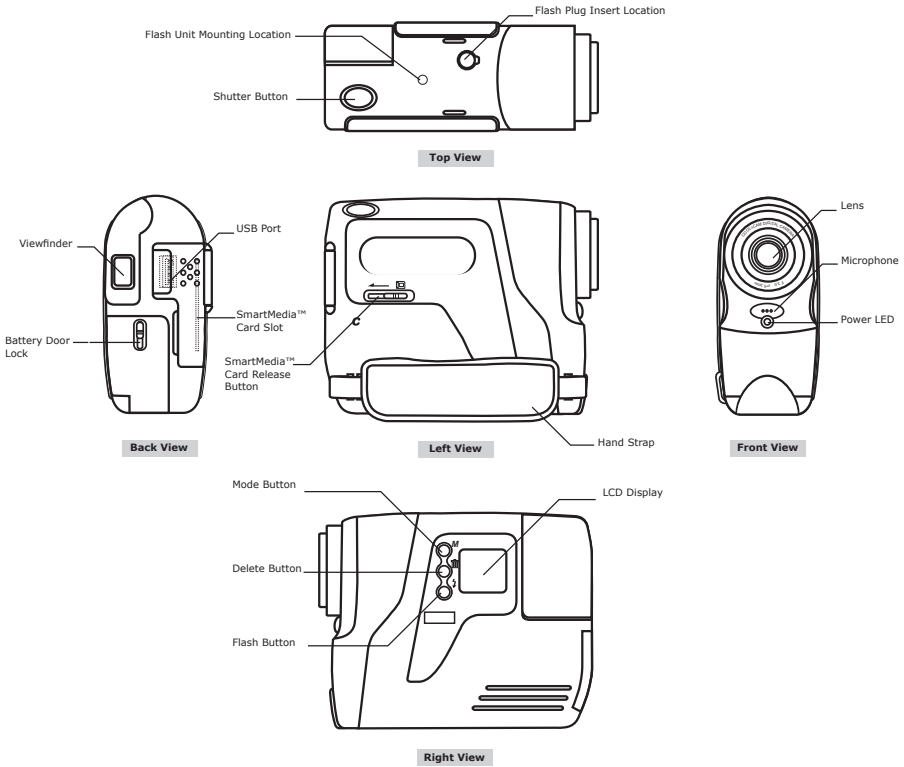
### 6.1 Batteries Replacement

1. Slide the button on the battery door (as shown in the diagram below), Insert the 2 new AAA alkaline batteries into the battery compartment (Make sure you follow the correct polarity(+) (-) as indicated.)
2. Close the battery door by flipping the Battery Door and secure it by sliding to lock position.



## 7. Getting to Know Your ACTOR

Refer to the picture below for a quick overview for your **ACTOR**.



### 7.1 Shutter Button

The Shutter Button has 4 functions. Although these are covered in more detail later in this manual, please find below a brief description together with LCD display icons for each function.

#### 7.1.1 Still Image

To take an image, aim the **ACTOR** by looking through the viewfinder and press the Shutter Button once.

#### 7.1.2 Movie Clip with audio



To take a movie clip, press and hold down the Shutter Button to start taking continuous images and stop by releasing the Shutter Button, a "beep" sound means you have taken a movie clip.

#### 7.1.3 Audio Recording



To record an audio clip, place the microphone on **ACTOR** close to the object you want to record. Press and release the Shutter Button to start recording. Press and release the shutter button again to finish the recording.

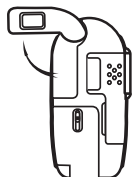
#### 7.1.4 Self-Timer



To start the 10 second Self-Timer, simply press the Shutter Button when the **ACTOR** is in the Self-Timer Mode.

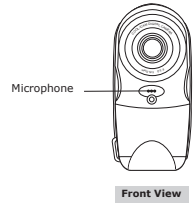
### 7.2 Flip out Viewfinder

Flip your viewfinder as illustrated in the diagram. The viewfinder is the window you look through when you aim the **ACTOR**. Make sure you are center and square onto the subject in the viewfinder before taking an image. Some practice maybe required.



### 7.3 Microphone

The Microphone is located at the front of your **ACTOR**. Put it close to the sound source to record an audio clip.



### 7.4 Mode Button

The Mode Button has 2 primary functions:

#### 7.4.1 Turning your ACTOR On from the Stand-by Mode

Pressing the Mode Button when the **ACTOR** is in Stand-by Mode (LCD is blank) will reactivate your **ACTOR**.

#### 7.4.2 Cycling Through the Operating Modes

You can also use the Mode Button to cycle through the operating modes of your **ACTOR**. (For more details, see Section 8. Getting Started)

### 7.5 LCD Display

By default, the icon LCD screen displays the number of images taken. It is also used in conjunction with the Mode Button to display various **ACTOR** mode settings and battery status.

	Continuous Mode		No. of images remaining/ LCD message (details will be available under separate sections)	<b>HIGH</b>	High Resolution
	Flash On	Self-Timer		<b>NORMAL</b>	Normal Resolution
	Low Battery Indicator	Audio Recording		<b>LOW</b>	Low Resolution
	"Minutes" Display	"Second" Display			

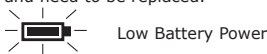
### 7.6 Power

#### 7.6.1 Stand-by Mode

After a period of 60 seconds inactivity, the **ACTOR** will switch to Stand-by Mode automatically and the LCD will go blank. All images taken will not be lost as they are stored in the SmartMedia™ Card. Simply press the Mode Button to reactivate your **ACTOR**.

#### 7.6.2 Main Battery

When power is low, the icon will flash then the LCD will go blank. A beep sound when low battery levels are reached. This indicates that the batteries are weak and need to be replaced.



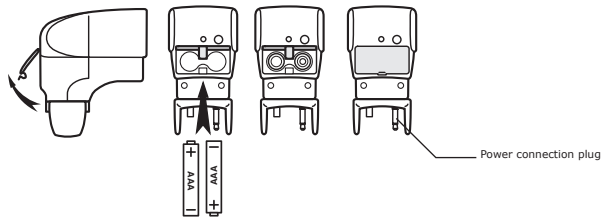
#### Important Note:

After the LCD goes blank, cannot activate your **ACTOR** by pressing the Mode Button, you must replace the batteries.

### 7.7 SPYPEN Flash Attachment

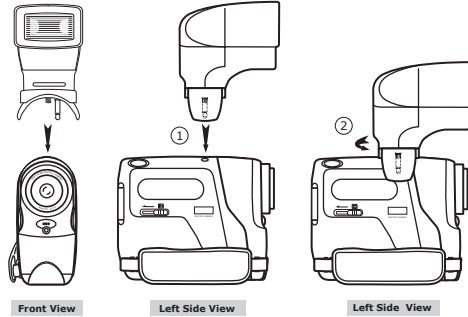
#### How to replace the batteries in the SPYPEN Flash Unit

Remove the battery compartment cover from the flash bar and insert 2 AAA batteries (supplied) into the battery compartment. Ensure you have inserted the batteries using the correct polarity (+) (-) by following the diagram inside the battery compartment and follow the diagram below.



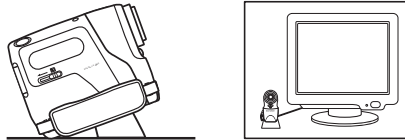
### Connecting the SPYPEN Flash unit to the ACTOR:

Carefully connect the Flash Unit to the top of the **ACTOR** ensuring the power connection plug is all the way in, and the Flash Light is firmly secured on to the **ACTOR** by winding the round knob to the left to lock the flash to the **ACTOR**.



### 7.8 ACTOR Stand

When you want to use your **ACTOR** as a web-cam, use the enclosed stand and position accordingly, e.g. next to your computer monitor. This is also ideal for use when using the Self-Timer Modes.



#### Important Note:

To use as a web-cam, you will require Internet access. To talk and listen, you will require a sound card, speakers and microphone (not supplied).

### 7.9 SmartMedia™ Card Slot

#### 7.9.1 What is a SmartMedia™ Card - a brief explanation

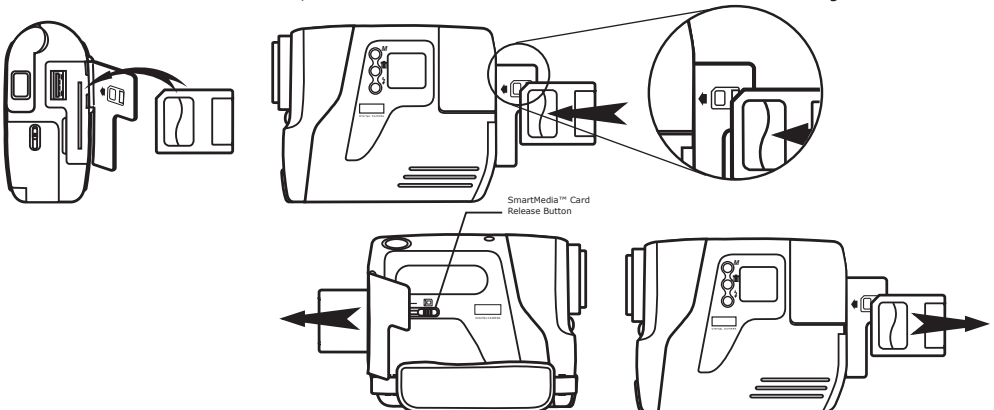
SmartMedia™ memory cards expand your ability to store more images. SmartMedia™ memory cards can be reused. Simply erase the data that is not needed and the SmartMedia™ card is ready for reuse. The SmartMedia™ card can be removed from your **ACTOR** without fear of losing the data you have stored, and additional cards can be then be inserted. This is especially advantageous when you are away from your PC for prolonged periods of time (like holidays) where you don't have the facility to upload the images daily to your computer.

#### Important Note:

- Before deciding the size of the SmartMedia™ memory card you may want to purchase, it is advisable to understand the memory capacity of each size of SmartMedia™ card and how that equates to the number of images each SmartMedia™ card can hold.
- Your **ACTOR** can use SmartMedia™ Card of 8, 16, 32, 64 and 128MB memory sizes.
- Images stored on your SmartMedia™ card are an approximate calculation. Depending on the content of the image may vary the image file size.

#### 7.9.2 Inserting and ejecting your SmartMedia™ Card

1. Open flap and slide in the SmartMedia™ Card slot provided. Ensure the SMC is inserted the correct way round.
2. To remove the SmartMedia™ Card, slide the SmartMedia™ Card Release Button as shown in the diagram below.





### 7.9.3 Using SmartMedia™ Card with ACTOR

Your **ACTOR** uses SmartMedia™ Card as the main storage of your images. For more images storage, you can extend by using higher memory SmartMedia™ Card(not included). Your **ACTOR** can use SmartMedia™ Card of 8, 16, 32, 64 and 128MB memory sizes.

#### Important Note:

- You can use any SmartMedia™ Card that has been formatted by other device, but it will wipe out any insisting files on it when loaded. You also cannot use it in the other device.
- Your image taken by **ACTOR** and store in SmartMedia™ Card may not read from general SmartMedia™ Card Reader and other brand camera.
- If **LE** appears in your LCD, it means there is no SmartMedia™ Card in your **ACTOR**.
- When the SmartMedia™ Card is full, the icon(s) in the LCD display will flash.

## 8. Getting Started

### 8.1 Switching the ACTOR On from the Stand-by Mode

Press and release the Mode Button once when the **ACTOR** is in Stand-by Mode (LCD is blank) will reactivate your ACTOR the LCD lights up after several seconds.

### 8.2 Taking an Image


Press the Shutter Button to take an image. The **ACTOR** will beep. A high pitched beep indicates that the image was taken successfully and the counter will count up. The LCD screen displays the number of images taken. Press the Shutter Button to take an image. 3 modes (high, normal and low resolution) where you could select to take your image.

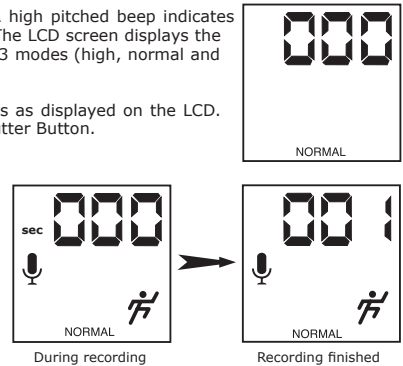
By pressing the Mode Button you can cycle through additional features as displayed on the LCD. When a given mode is displayed it can be accessed by pressing the Shutter Button.

### 8.3 Video Clip with Audio Mode



To create a movie clip:

1. Press the Mode Button until both  appears on the LCD. There are two modes: Normal mode for CIF recording and Low mode for QCIF recording.
2. Press and hold the Shutter Button to start taking the movie. Release the Shutter Button to stop recording the movie.
3. During Movie Recording, the 3 digits 7 segments will display number of seconds taken.
4. When recording is finished, the 3 digits 7 segments will display number of clips remaining.




#### Important Note:

Storage of both normal and low resolution video clips in the same SMC is not recommended as this may lead to distortion of the low resolution video clips.

### 8.4 Self-Timer Mode




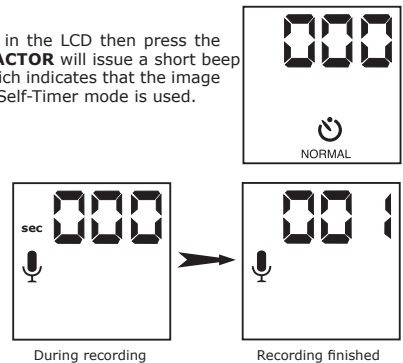
To use the self-timer feature, press the Mode Button until  appears in the LCD then press the Shutter Button to start a 10 second self-timer. The LED will blink and **ACTOR** will issue a short beep every second and then a long beep just prior to a further short beep which indicates that the image has been successfully taken. The resolution is set at NORMAL only when Self-Timer mode is used.

### 8.5 Audio Recording Mode



To create an audio clip:

1. Press the Mode Button until the  appears on the LCD.
2. Press and release the Shutter Button to start recording. Press and release the Shutter Button again to stop recording.
3. During Audio Recording, the 3 digits 7 segments will display number of seconds taken.
4. When recording is finished, the 3 digits 7 segments will display number of clips taken.




### 8.6 Deleting the Last Image/Last Movie Clip with Audio/Last Audio Clip

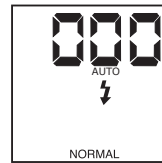
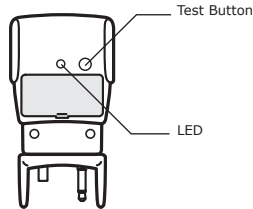
When you wish to delete the last image/last movie clip with audio/last audio clip in your **ACTOR**. Press DELETE button to delete last image/movie clip/audio clip.

### 8.7 Changing the Image Resolution

Image resolution can be changed whenever you need. Cycle through the Mode options by pressing the Mode Button until High/Normal/Low appears at the rear LCD.

## 8.8 Flash Light Mode (Optional)

Select  (Flash Mode) on the LCD display using the Mode Button. Press the Shutter Button to take the still image while the LED on the flash unit is lit. The LED may take a few moments to illuminate between taking images. The Test Button is only use to test whether the Flash Unit work or not.



### Important Note:

When Flash Light mode is ON. **ACTOR** will automatically switch into Auto Flash Mode, this mean that **ACTOR** will Flash (if Flash Unit is connected) automatically when insufficient light exposure is detected.

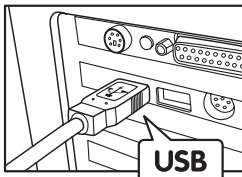
## 8.9 Turning your ACTOR OFF

You can switch off your **ACTOR** by pressing and holding on to the Mode Button until the LCD goes "Blank"

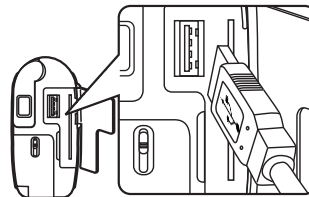
## 9. Connecting your ACTOR to Your Computer

The USB cable allows you to upload images and audio from the **ACTOR** to your PC. One end of the cable connects to the USB port on the side of the **ACTOR** and the other end connects to your PC's USB port. When your **ACTOR** is connected to your PC, it will draw power from the PC in order to preserve your battery life.

The USB port can be found on the front or back panel of your PC. Look for this  symbol next to the connection port. (Also see your PC operating manual for the location of your USB connection port.)



USB Series "A" Plug Connects to your PC



USB Series "A" Plug Connects to your **ACTOR**

When you first connect your **ACTOR** to your PC, a message appears on screen saying "New Hardware Found" and "Building Driver Information Database". After this, you can start to upload images!

### Important Note:

Connecting your **ACTOR** directly to PC via USB cable, it is not recommended to use USB hub for connection.

## 10. How to Use Other Softwares

### For Windows® User:

You can upload your images directly from your **ACTOR** into PhotoStudio®, ArcSoft PhotoFantasy™, ArcSoft PhotoPrinter® and ArcSoft VideoImpression™. Images can also be retrieved previously saved in your computer files.

### 10.1 How to use PhotoStudio® 2000

1. Select the "PhotoStudio® 2000" icon from the "ArcSoft Camera Suite" program group on the Windows® Start Menu. You can now start to download your stored images from your **ACTOR** by the following steps:
2. Go to "File" and select "Select Source". Select "SPYPEN ACTOR" as source.
3. Go to "File" and select "Acquire". The capture interface will show up.
4. To capture image(s), highlight the wanted image(s) and click "Capture".

For further help on how to use PhotoStudio® 2000, go to "Help" to access the Help Topics. Visit <http://www.arcsoft.com> for all your FAQ's, tips and technical support. See Section 12 for more details.



## 10.2 How to use ArcSoft PhotoFantasy™ 2000

1. Select the "PhotoFantasy™ 2000" icon from the "ArcSoft Camera Suite" program group on the Windows® Start Menu.
2. Click "Get Fantasy" to select the template in the existing library and then click "OK" to confirm.

 **Important! Make sure the "My Camera" CD-ROM is in the CD-ROM Drive.**

### Using the images stored in your ACTOR:

3. Double click on "Get Photo 1" and click "Acquire". Select "SPYPEN ACTOR" as the source.  
The capture interface will show up.  
To capture image(s), highlight the wanted image(s) and click "Capture".
4. The captured images will be shown in the window. Select the image you want and click "Capture".
5. The selected image will shown within the "mask" on the selected template. You can play with the image by using the function icons.

### Using live images:-

6. You can also capture a live shot when your **ACTOR** is connected to your PC by the following steps:
7. Click "Get Fantasy" to select the template in the existing library and then click "OK" to confirm.

 **Important! Make sure the "My Camera" CD-ROM is in the CD-ROM Drive.**

8. Click the "Camera front icon" on the top to start the live shot mode. A "Video for Windows Driver Options" dialogue box will pop up. Select "SPYPEN ACTOR" and click "OK".
9. Click the "Round icon" on the top to start live shooting. The image captured will be shown within the "mask" on the selected template. Click the "Camera Back icon" to capture the live shot you want.
10. You can resize, rotate or reposition the images by using the function icons shown on the right hand side or reposition the image using your mouse and dragging the image.
11. For further help on how to use ArcSoft PhotoFantasy™ 2000, go to "Help" to access the Help Topics.  
Visit <http://www.arcsoft.com> for all your FAQ's, tips and technical support. See Section 12 for more details.

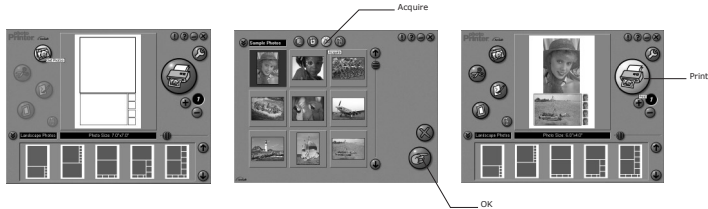


Select Camera Source  
Start Live View  
Capture Image



### 10.3 How to use ArcSoft PhotoPrinter® 2000

1. Select the "PhotoPrinter® 2000" icon from the "ArcSoft Camera Suite" program group on the Windows® Start Menu.
  2. Choose the "Page Layout". The selected page layout will on shown.
  3. Click "Get Photo" and then "Acquire". Select "SPYPEN ACTOR" as source. The capture interface will show up.  
To capture 1 image, select the wanted image and click "Capture".
  4. The captured images will be shown on the photo library panel. Select the image you want and click "OK".
  5. The selected image will be shown on the chosen template. Click "Print" when finish placing the images.
  6. For further help on how to use ArcSoft PhotoPrinter™ 2000, click the "?" on the top right hand corner to access the Help Topics.
- Visit <http://www.arcsoft.com> for all your FAQ's, tips and technical support. See Section 12 for more details.

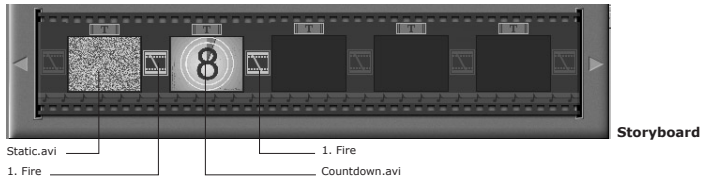


### 10.4 How to use ArcSoft VideoImpression™ 1.6

Lets make a video!

Follow these basic steps to make your first video.

- Step 1 Click on new icon.
- Step 2 Using the **Video Templates** selector button select video templates.
- Step 3 Double click on the Static.avi screen in the video template selection and a copy will appear in the first large frame on the storyboard on the bottom.
- Step 4 Double click on the small frame directly right of the large frame. A new template will appear at the top called "special effects" Double click on the "1. Fire" special effect which will now drop into the special effect frame you highlighted.
- Step 5 Double click on the next right large frame and repeat step 3 using a video template and double click template 5. Countdown.avi. Repeat step 4.



Adding an existing video.

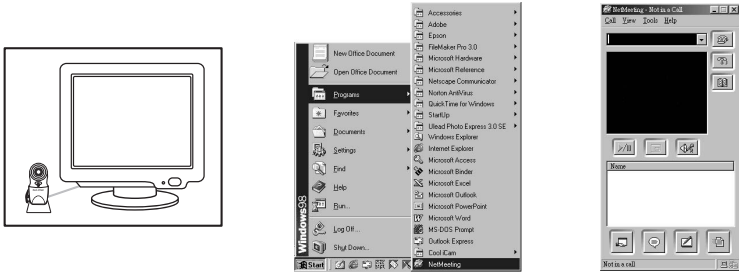
- Step 6 To add a video you have already made double click on the next large frame in the story board to the right. Click on the "Get" icon and select a video you had made and filed in the folder called "album" click on Get, with the selector click on the down arrow and select desktop and then double click on "Album" folder and select a file ending with .mov (video file) the video will appear in the video templates. Double click on the video and it will appear just like other video templates in the storyboard. Now go to step 10.  
Alternatively you can produce a live video.
- Step 7 Ensure your **ACTOR** is connected to the computer via the USB cable. Click on the capture icon. And press the **record** icon. Wait for the video link to go live and now you're recording, press the ESC key on your keyboard to end the video.
- Step 8 Press the "Save" icon and name your file, and then press "save". Video impression will ask you where you want to place your video. Select "video template".
- Step 9 Select the "album" icon and your video clip you have just produced will appear in the video templates. Double click on your video, your video will now drop into the storyboard.  
Running the video.
- Step 10 Select the "play movie" icon which will assemble your video together. Press the play icon to watch your completed video. Watch to see how the special effects merge between the frames on the story board. Now you try to make your own and also try the audio template.

## 10.6 How to use Microsoft® NetMeeting™

1. Connect your **ACTOR** to the USB cable on one end.
2. Connect your USB cable to an available USB port on your PC on the other end.
3. Put your **ACTOR** next to your PC monitor or another flat surface.
4. Connect your microphone (not included) to your audio card's external microphone connector.
5. Double click the "NetMeeting" icon on the desktop or select the "NetMeeting" icon from the Windows Start Menu.
6. Type in the IP address, e-mail address, computer name or telephone number for the person you want to call and press the "Place Call" button.

To find your own IP address, go to "Start" and click "Run". Type in "winipcfg" and click "OK", IP configuration window will appear and you can see your IP address.

7. If you need further help on how to use Microsoft® NetMeeting™, select the "Help" under the manual bar and choose the topic you need. Or you can visit the following website: <http://www.microsoft.com/windows/netmeeting>



## 10.7 How to use Adobe® Acrobat® Reader

Adobe® Acrobat® Reader enables you to view document in .pdf format. For more details go to [www.adobe.com/acrobat](http://www.adobe.com/acrobat).

## 10.8 How to update DirectX

Please note that Window® 98SE users need to download DirectX 6.1 or higher software from the internet. For download and installation details, please visit the following website: <http://www.microsoft.com/directx>

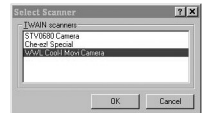
## 10.9 How to upload stored image/Video Clip/Audio Clip by using Windows® application "Imaging"

### 10.9.1 Uploading still images to PC via USB

1. Connect your **ACTOR** to your PC via USB cable.
2. Go to Windows Start menu/Program/Accessories/Imaging to launch Imaging Software.



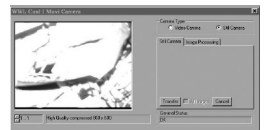
3. Click File/Select Source, select "SPYPEN ACTOR"



#### Note:

If more than one camera driver are used on your PC, please specify "SPYPEN ACTOR" driver currently using.

4. Click File > Scan New > select "Still Camera" to upload still images.



5. To upload still image, user can use the scroll icon to choose the image or transfer all by pressing the "Transfer" button.

#### Important Notes:

Transferred image on the imaging software can only save as tif format. If you want to obtain jpg file format, you can use the ArcSoft PhotoImpression™ to convert the files.

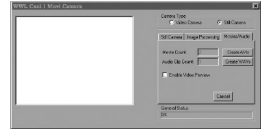
### 10.9.2 How to upload movie clip via USB to PC

1. Click File > Scan New, "Still camera", "Movie/Audio", then click "Create Avi" button.

#### Important Notes:

Depend on the size of the clip, the upload will take some times but it doesn't freeze up the computer. You can go back to desktop and use the other application when the uploading is in progress.

2. Enter the file name and path where movie clip will be located.



#### Important Notes:

The saved file name(s) is in n1...nx where n is the file name you input and x is the number of stored movie clip(s).

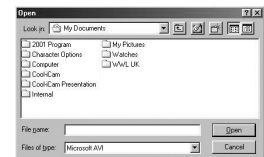
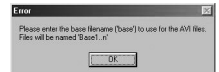
### 10.9.3 How to upload Audio clip via USB to PC

1. Click File/Scan New, "Still Camera", "Movie/Audio", then click "Create Wav" button.

#### Important Notes:

Depend on the size of the clip, the upload will take some times but it doesn't freeze up the computer. You can give back to desktop and use the other application when the uploading is in progress.

2. Enter the file name and path where movie clip will be located.



#### Important Notes:

The saved file name(s) is in n1...nx where n is the file name you input and x is the number of stored audio clip(s). The saved file will be in wav format.

### 10.10 How to capture the video image

#### 10.10.1 Uploading still images to PC via USB

1. Connect your **ACTOR** to your PC via USB cable.
2. Go to Windows Start menu/Program/Accessories/Imaging to launch Imaging Software.



3. Click File/Select Source, select "SPYPEN ACTOR"

#### Note:

If more than one camera driver are used on your PC, please specify "SPYPEN ACTOR" driver currently using.

4. Click File/Scan New, select "Video Camera" to capture video image. You can select different resolution on video format. Click the Transfer button to transfer capture image to PC.



## 11. SPYPEN® WorldWide Customer Support

### **plawa-feinwerktechnik GmbH & Co. KG**

Bleichereistr. 18  
73066 Uhingen - Germany  
Helpline: +49 (7161) 93872-0 (English, Deutsch)  
Website: [www.spypen.com](http://www.spypen.com), [www.plawa.de](http://www.plawa.de)  
Email: [support@plawa.de](mailto:support@plawa.de)

## 12. ArcSoft® WorldWide Customer Support

### **For Japan**

ArcSoft Japan Support Center (Tokyo)  
Tel: +81-03-3834-5256  
Fax: +81-03-5816-4730  
Web: <http://www.mds2000.co.jp/arcsoft>  
E-mail: [japan@arcsoft.com](mailto:japan@arcsoft.com) and  
[support@mds2000.com](mailto:support@mds2000.com)

### **For China**

ArcSoft China Support Center (Beijing)  
Tel: 8610-6849-1368  
Fax: 8610-6849-1367  
E-mail: [china@arcsoft.com](mailto:china@arcsoft.com)

### **For Oceania**

ArcSoft Australian Support Center  
(Baulkham Hills, New South Wales)  
Tel: 61 (2) 9899-5888  
Fax: 61 (2) 9899-5728  
E-mail: [support@supportgroup.com.au](mailto:support@supportgroup.com.au)

### **For North America**

ArcSoft HQ Support Center  
(Fremont California, CA)  
Tel: 1-800-762-8657 (toll free number)  
Fax: 1-510-440-1270  
E-mail: [support@arcsoft.com](mailto:support@arcsoft.com)

### **For South & Central America**

Tel: 1-510-979-5520  
Fax: 1-510-440-1270  
E-mail: [latinsupport@arcsoft.com](mailto:latinsupport@arcsoft.com)

### **For Europe / Middle East / Africa & Rest of the World**


ArcSoft Europe Support Center (Ireland)  
Tel: +353-(0) 61-702087  
Fax: +353-(0) 61-702001  
E-mail: [europe@arcsoft.com](mailto:europe@arcsoft.com)

Visit [www.arcsoft.com](http://www.arcsoft.com) or go to Start -> Programs -> ArcSoft Camera Suite -> Web Services for tips, technical support and frequently asked questions (FAQ's).

## 13. Troubleshooting

The troubleshooting guide is designed to help you. If problems continue, please contact your local customer support hotline. See your registration card for helpline contact details.

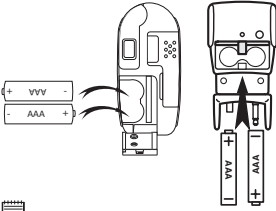
### For Windows® Users:

Symptom	Problem	Solution
I receive an error message when I am installing "My Camera Driver"	"My Camera Driver" does not load.	Shut down all other applications and attempt to reinstall the driver, or download the updated driver from <a href="http://www.spypen.com">www.spypen.com</a> and install the updated driver. Check the USB controller in your BIOS if they are activated. If these does not work contact your national customer support representative.
I receive a message no image to download when I try to upload to my computer.	Connection failure.	Check all cables connections are secured.
I cannot run the My Camera Driver.	Conflict with another camera driver capture device.	If you have any other camera installed on your computer, remove the camera and it's driver completely from your system to avoid conflict with another camera or capture device.
My ACTOR LCD displays  .	This means there is insufficient power to upload images to your computer.	If you need to change batteries, and retain the images in your ACTOR memory, ensure you are connected to a PC which is turned on via the USB cable, which will then draw power from the PC whilst you insert new batteries.
I cannot access any PhotoFantasy's templates.	No CD in CD-ROM drive.	Put My Camera CD in the CD-ROM drive.
My CD Installation wizard does not work.	The auto installation file is switched to off or The CD-ROM is disconnected.	Go to the computer desktop. Right click on "My Computer". Click "Properties". Select "Device Manager". Double click on "CD_ROM", double click on "CD-R (normally the manufacturer's name. click on "Settings". Ensure "Auto insert notification" is ticked and the "disconnect" is ticked. If you change the settings the computer will ask you to restart your PC. Click "Yes".
My Flash Unit will not operate.	My Flash Unit is not properly connected. or There are no batteries installed in the Flash Unit. or The batteries in the Flash Unit have no or insufficient power.	Check the Connection. or Install 2 x AAA Batteries. or Switch the Flash Bar to ON and check to see if the Green LED lights up. If the LED is continuously you have enough power, if the LED does not light up within 30 seconds, this means you need to replace the batteries.
My image is too dark even though I used the Flash Unit.	The Flash Light is obstructed by something or The LED indicator is not lit up.	Keep hands and garments away from the Flash Light. Hold the base of the ACTOR with the left hand and operate the Shutter Button and Mode Button with your thumb and forefinger.
I cannot activate my ACTOR by pressing the Mode Button.	Insufficient battery power or batteries is missing.	Upload all images to your PC and replace batteries.

Please also refer to the help files & User Guides that accompany the enclosed applications. For further information and support, please visit our website: <http://www.spypen.com>



## 14. Battery Guidance



### Important Note:

We strongly recommend that you do not use rechargeable batteries as this will affect the performance of your **ACTOR** and Flash Unit.

### WARNINGS!

- Batteries should be replaced by an adult.
- Non-rechargeable batteries are not to be recharged.
- Rechargeable batteries are to be removed from the camera before being charged (if removable).
- Rechargeable batteries are only to be charged under adult supervision (if removable).
- Different types of batteries or new and used batteries are not to be mixed.
- Only batteries of the same or equivalent type as recommended are to be used.
- Batteries are to be inserted with the correct polarity.
- Exhausted batteries are to be removed from the camera.
- The supply terminals are not to be short-circuited.
- Do not mix alkaline, standard (carbon-zinc), or rechargeable (nickel-cadmium) batteries.
- Do not dispose the batteries in fire.
- Batteries are to be removed from the camera when not in use.
- Do not use rechargeable batteries.

These instructions should be retained for future reference.

## 15. Technical Specifications

- Memory:
  - Internal memory - 8MB SDRAM (FOR DATA PROCESSING ONLY)
  - External memory - Support SmartMedia™ Card (SMC) 8 ~ 128 MB
- Image Performance for Video on Web-cam:
  - Approximately 10fps (frame per second) for 800 x 600 pixel
  - Approximately 30fps for 640 x 480 pixel
- Still Image Resolution:
  - High Resolution - 800 x 600 pixel (no compression)
  - Normal Resolution - 800 x 600 pixel (4-to-1 compression)
  - Low Resolution - 800 x 600 pixel (8-to-1 compression)
- Storable Images (base on 8MB SMC storage):
  - High Resolution - 16 images
  - Normal Resolution - 64 images
  - Low Resolution - 128 images
- Video Clip:
  - Unlimited when connected to the computer via video capture software
  - Limited when using the SMC - Approximately by Normal mode: 30 minutes (320 x 240) for 128MB SMC  
Low mode: 50 minutes (160 x 120) for 128MB SMC
- Audio Recording: Approximately 32 minutes for 8MB SMC in audio recording clip
- File Format:
  - For Windows® Users:
    - Still Image - Compression in JPEG format after download to PC via USB (depend on application used)
    - Audio - default WAV format
    - Video Clip - AVI format
- External Connector: USB, external flash connector
- Auto Power Off: 60 seconds after inactivity
- Power Supply:
  - **ACTOR**: USB Port, 2 x AAA Batteries
  - Flash Unit: 2 x AAA Batteries
- Operating System:
  - For Windows® Users: Microsoft® Windows® 98SE and Me and 2000



### Camera Cautions

- Never immerse any part of the **ACTOR** or its components into any fluid or liquid.
- Disconnect the **ACTOR** from your PC before cleaning it.
- Remove dust or stains with a soft cloth dampened with water or neutral detergent.
- Do not place hot items on the surface of the **ACTOR**.
- Do not attempt to open or disassemble the **ACTOR**. This will affect any warranty claim.

## 16. FCC Notice

This device complies with Part 15 of FCC Rules. Operation is subject to the following two conditions: (1) This device may not cause harmful interference, and (2) This device must accept any interference received, including interference that may cause undesired operation.

Warning: Changes or modifications to this unit not expressly approved by the party responsible for compliance could void the user's authority to operate the equipment.

NOTE: This equipment has been tested and found to comply with the limits for Class B digital device, pursuant to Part 15 of the FCC Rules. These limits are designed to provide reasonable protection against harmful interference in a residential installation. This equipment generates, uses and can radiate radio frequency energy and, if not installed and used in accordance with the instructions, may cause harmful interference to radio communications.

However, there is no guarantee that interference will not occur in a particular installation. If this equipment does cause harmful interference to radio or television reception, which can be determined by turning the equipment off and on, the user is encouraged to try to correct the interference by one or more of the following measures:

- Reorient or relocate the receiving antenna.
- Increase the separation between the equipment and receiver.
- Connect the equipment into an outlet on a circuit different from that to which the receiver is needed.
- Consult the dealer or an experienced radio/TV technician for help.

Shielded cable must be used with this unit to ensure compliance with the Class B FCC limits.

Under the environment with electrostatic discharge, the product may malfunction and require user to reset the product.